

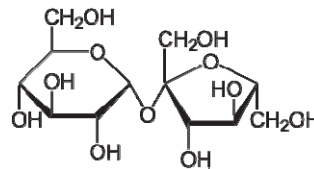
Sucrose

#GCM27.0500
(for research only)

Product:	Sucrose (Saccharose) is a disaccharide composed of glucose and fructose, which are connected via an $\alpha(1\rightarrow2)$ glycosidic bond. Sucrose is commonly used as a supplement in culture media for the cultivation of microorganisms.
Quantity:	500g
Appearance:	White, small crystals.
Storage:	2°C – 25°C. When not in use, keep container closed to avoid hydration.

Formula:

Chemical Formula:	$C_{12}H_{22}O_{11}$
Molecular Weight:	342,30 g/mol
Specific Rotation:	+66,3°-67,0°



Purity:

Insoluble matter (H ₂ O):	Max: 0,005%
Monosaccharides:	Max: 0,04%
Sulfate/Sulfite:	Max: 0,0065%
Chloride (Cl ⁻):	Max: 0,0035%
Heavy Metals (Pb):	Max: 0,005%
As:	Max: 0.001%

GRiSP Research Solutions
Rua Alfredo Allen, 455
4200-135 Porto
Portugal
www.grisp.pt | info@grisp.pt

ORDERING INFORMATION – Culture Media and Components

Reference #	Product Name	Quantity
GCM01.0500	LB Agar (Lennox)	500 g
GCM02.0500	LB Broth (Lennox)	500 g
GCM03.0500	Luria Agar (Miller's LB Agar)	500 g
GCM04.0500	Luria Broth (Miller's LB Broth)	500 g
GCM05.0500	Luria Agar (Miller's Modification)	500 g
GCM06.0500	Luria Broth (Miller's Modification)	500 g
GCM07.0500	Terrific Broth	500 g
GCM08.0500	Modified Terrific Broth	500 g
GCM09.0500	2xYT Medium	500 g
GCM10.0500	2xYT Agar	500 g
GCM11.0500	SOB Medium	500 g
GCM12.0500	SOC Medium	500 g
GCM13.0500	YPD Broth	500 g
GCM14.0500	YPD Agar	500 g
GCM15.0500	YNB w/o amino acids and w/o ammonium sulfate	500 g
GCM16.0500	YNB w/o amino acids with ammonium sulfate	500 g
GCM17.0500	LB Broth (Auto Induction Medium)	500 g
GCM18.0500	2xYT Broth (Auto Induction Medium)	500 g
GCM19.0500	Terrific Broth (Auto Induction Medium)	500 g
GCM20.0500	Super Broth (Auto Induction Medium)	500 g
GCM21.0500	Peptone	500 g
GCM22.0500	Bacterial Peptone	500 g
GCM23.0500	Tryptone	500 g
GCM24.0500	Yeast Extract	500 g
GCM25.0500	Bacteriological Agar	500 g
GCM26.0500	Dextrose	500 g
GCM27.0500	Sucrose	500 g