

Refractometers

Analog and digital

HIGHLIGHTS

- Portable, accurate and fast
- Wide range of applications
- Easy to use

Refractometers are used for the identification of substances and concentration measurement of fluids. Because the refractive index (R.I.) of a solution is proportional to the concentration it is easy to identify the substance or to measure the purity and concentrations of solutions. The Euromex refractometers are calibrated at 20° Celsius. Most refractometers are equipped with Automatic Temperature Compensation (ATC). Euromex offers analog and digital hand refractometers, tabletop abbe refractometers and gemological refractometers.



● Analog



● Digital

Handheld, analog and digital refractometers

Handheld refractometer - Sugar concentration

Concentrations of sugar in marmalades, fruits, honey, syrups, wine and monitoring of oil emulsions

MODELS	Scales (Brix)	Accuracy (Brix)	Scales (RI)	Accuracy (RI)	ATC	Analog	Digital
RF.5190	0 - 90	0.2				•	
RF.5510	0 - 10	0.1			•		•
RF.5520	0 - 20	0.1			•		•
RF.5532	0 - 32	0.2			•		•
RF.5562	28 - 62	0.2			•		•
RF.5580	0 - 80	0.5			•		•
RF.5582	40 - 82	0.5			•		•
RF.5592	58 - 92	0.5			•		•
RD.5635	0 - 35	0.1			•		•
RD.5645	0 - 45	0.1	1.33 - 1.40	0.0001	•		•
RD.5665	28 - 65	0.1			•		•

Handheld refractometer - Battery acid and Coolant

For testing water-soluble coolants and battery acid solutions

MODEL	Scales (°C)	Accuracy (°C)	Scales (RI)	Accuracy (RI)	ATC	Analog	Digital
RF.5650	0 - -50	5	1.15 - 1.30	0.01	•	•	
	Ethylene / Propylene glycol	Ethylene / Propylene glycol	Battery acid	Battery acid			

Handheld refractometers - Alcohol and alcohol-sugar solutions

Sugar concentration, % alcohol and alcohol/sugar solutions

MODEL	Scales (%)	Accuracy (%)	Scales (Brix)	Accuracy (Brix)	ATC	Analog	Digital
RF.5625	0 - 25	0.2	0 - 40	0.2	•	•	

Handheld refractometers - Sugar and salt

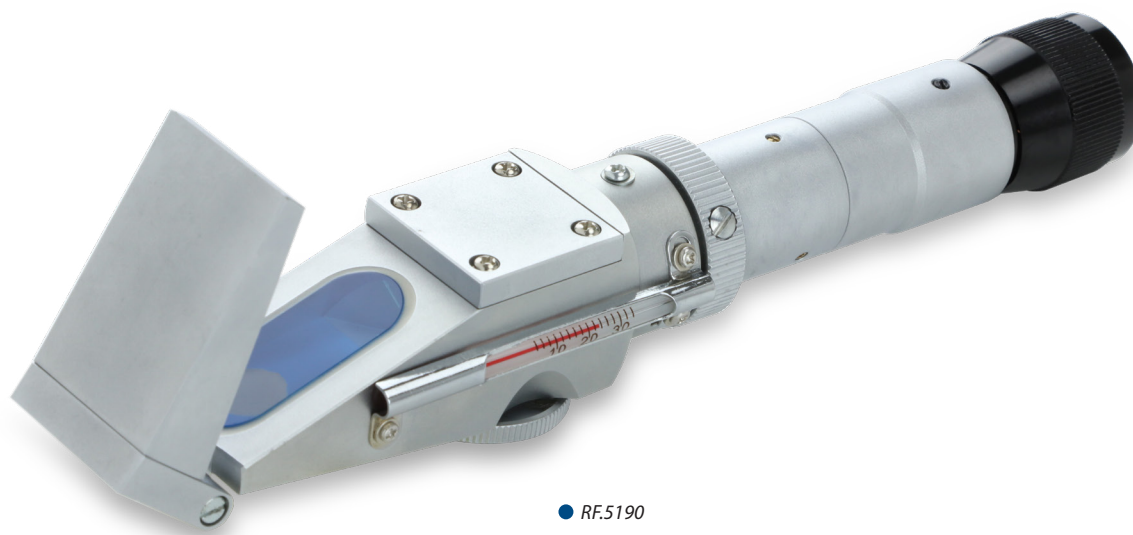
Substance identification of sugar and salt concentration

MODELS	Scales (°C)	Accuracy (°C)	Scales (Brix)	Accuracy (Brix)	Scales (%)	Accuracy (%)	Scales (RI)	Accuracy (RI)	ATC	Analog	Digital
RF.5610	0 - 100	1	0 - 10	0.1	-	-	-	-	•	•	
RD.5728	-	-	0 - 35	0.1	0 - 28	0.1	1.30 - 1.39	0.0001	•		•

Handheld refractometer - Clinical applications

For measuring clinical applications as Serum Protein (g/dl), Specific Gravity of Urine (sg) and Refractive Index

MODELS	Scales (g/dl)	Accuracy (g/dl)	Scales (sg)	Accuracy (sg)	Scales (RI)	Accuracy (RI)	ATC	Analog	Digital
RF.5612	0 - 12	0.2	1 - 1.05	0.002	1.333 - 1.360	0.0005	•	•	
RD.5712	0 - 12	0.2	1 - 1.05	0.001	1.33 - 1.39	0.0001	•		•



● RF.5190

Abbe laboratory refractometer

SUBSTANCE IDENTIFICATION

- The Abbe laboratory refractometer is a bench-top instrument for high-precision measurements of an index of refraction
- Abbe refractometers are more accurate than hand refractometers
- Capable of measuring all kinds of concentrations and identifying several types of substances
- The instrument is equipped with a built-in thermometer and water connection to control fluid temperatures
- Equipped with a Brix and a refraction index scale and supplied with a test plate
- The use of a cold light source like the LE.5209 is recommended for this type of refractometer
- Delivered with carrying case, thermometer 0-50° Celsius, calibration plate and adjusting tool

APPLICATION

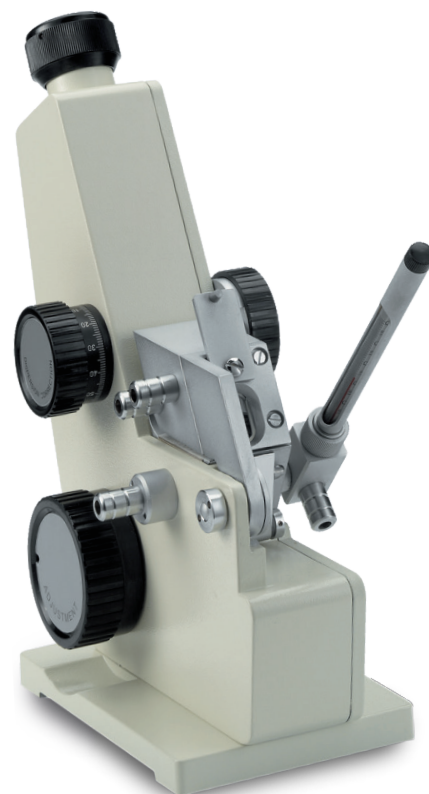
Suitable for determination of the refractive index of solid samples, such as glass, plastics, and polymer films

ACCESSORIES AND SPARE PARTS

- 98.492** Thermometer 0-50° C (for Abbe refractometer 98.490)
98.496 Calibration slide nD 1.5163 (for Abbe refractometer 98.490)
RF.5384 5 ml immersion nD 1.79 liquid

PACKAGE CONTENT

Delivered with carrying case, thermometer 0- 50° Celsius, calibration plate and adjusting tool



98.490 ●

MODEL	Scales (Brix)	Accuracy (Brix)	Scales (RI)	Accuracy (RI)	Remarks	Analog
98.490	0-95	0.5	1.300-1.700	0.0002	Abbe table refractometer without light source	•

Gemological refractometer

GEMSTONES

- Gemological refractometers are key instruments for research in gemological laboratories
- This table refractometer has been designed specifically for determination of precious stones based on refraction index measurement. Contains a 590 nm filter for generation of monochromatic light

APPLICATION

Identification of precious stones

ACCESSORIES AND SPARE PARTS

- RF.5295** Test slide 78.8 Brix for calibration of RF.5190
RF.5384 5 ml immersion nD 1.79 liquid for RF.5381
LE.5209 20 W 12 V cold light source with single fiber light conductor
SL.5208 Spare 20 W 12 V halogen bulb
RF.5384 5 ml immersion nD 1.79 liquid



RF.5381 ●

MODEL	Scales (RI)	Accuracy (RI)	Remarks	Bench-top instrument	Analog
RF.5381	1.30-1.81	0.01	With filter 590 nm	•	•