

# education

## digital solutions



digital solutions

Get ready to discover the digital world of microscopy with the newest Euromex digital educational products. The broad Euromex product range of digital cameras and digital microscopes with built-in camera offer the best matching solutions for your specific application needs

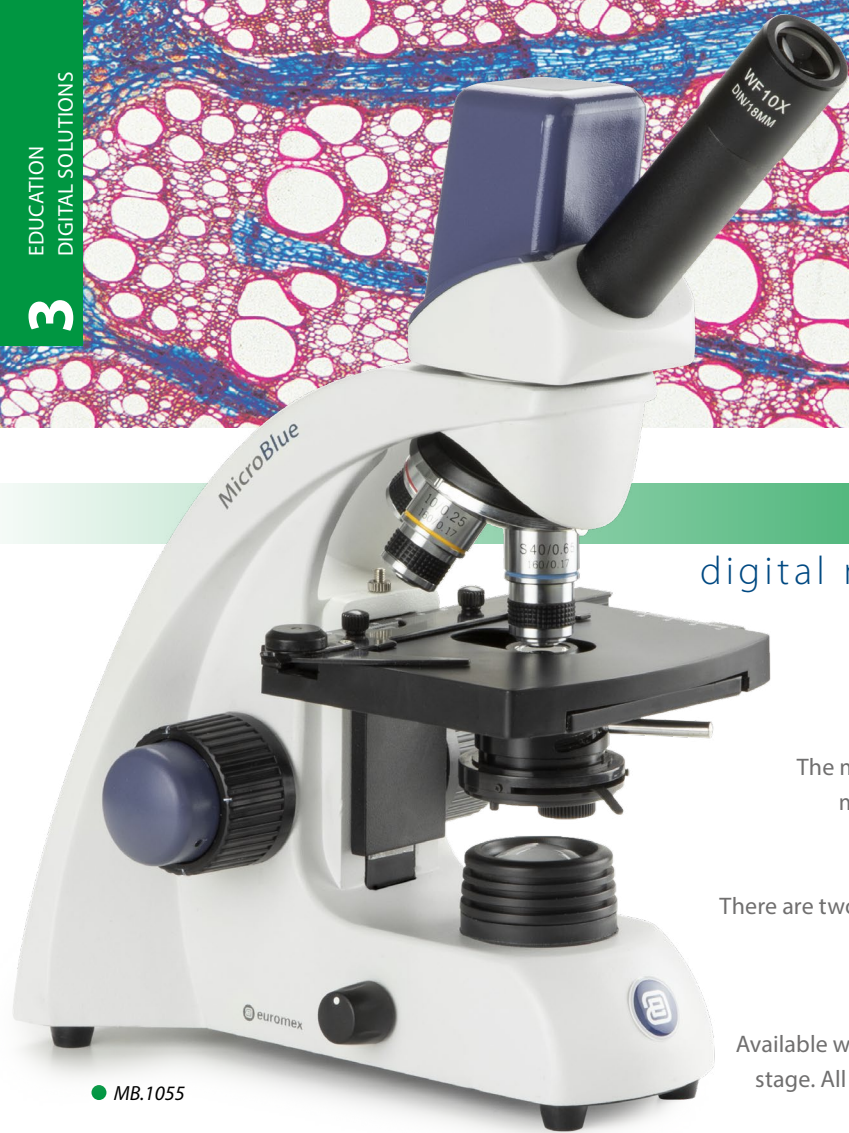
Euromex digital educational products incorporate all the latest available technology in this field, such as WiFi, HDMI, CMOS, HD-CMOS and sCMOS



<b>DIGITAL MICROSCOPES •</b>	<b>PAGE 74</b>
<b>MACROZOOMS •</b>	<b>PAGE 86</b>
<b>USB CAMERAS •</b>	<b>PAGE 88</b>
<b>HD CAMERAS •</b>	<b>PAGE 92</b>
<b>WiFi CAMERA •</b>	<b>PAGE 96</b>
<b>COOLED CAMERA •</b>	<b>PAGE 97</b>
<b>TABLET CAMERAS •</b>	<b>PAGE 98</b>
<b>SOFTWARE •</b>	<b>PAGE 102</b>
<b>ADAPTERS •</b>	<b>PAGE 104</b>



DIGITAL MICROSCOPES



MicroBlue  
digital microscopes with  
built-in 5.0 MP  
USB-2.0 camera

The modern MicroBlue is an entry-level microscope, especially appreciated when budgets are limited

There are two versions of the digital MicroBlue; one with a built-in digital camera, the other with an LCD screen

Available with plain or integrated mechanical stage. All models are equipped with 35 mm achromatic objectives

Mono

360°

Transmitted

LED

Abbe

ImageFocus

Digital

LCD

USB

Battery

100-240V

2 Years Warranty

5 Years Warranty

MB.1055
320 (h) x 151 (w) x 202 mm (d)   2.4 kg
MB.1051-LCD
378 (h) x 179 (w) x 202 mm (d)   2.48 kg

HIGHLIGHTS

- Economic microscopes for education
- Built-in digital 5.0 MP USB-2.0 camera
- 5.6 inch LCD screen
- Ergonomic carrying grip
- 5 Years warranty (2 years on camera)

SPECIFICATIONS

CAMERA

- All the MicroBlue build-in digital camera microscopes are equipped with a 5.0 MP 1/2.8" CMOS USB-2.0 camera
- A maximum resolution of 2560 x 1920, 24 bits color depth, up to 30 frames per second
- Supplied with ImageFocus Plus software, USB-2.0 cable, an 8 MB SD memory card and a micrometer 1mm/100 slide
- Warranty for the camera is two years

SOFTWARE

- The capture and analysis ImageFocus Plus software allows to save images in .jpg, .tif, .bmp or .dicom formats as well as .avi format videos
- Measurements and annotations can be done on live or captured images
- Compatible with Windows 7, 8 and 10, both 32 and 64 bits configurations. A Mac OS version is also available
- Free updates can be downloaded on our website



The LCD-head

LCD SCREEN

- All the MicroBlue LCD microscopes are equipped with a 5.6" LCD screen
- Screen resolution 640 x 480
  - Save images and videos directly to SD card
  - Image resolution 2048 x 1536, 1600 x 1200, 1280 x 960, 640 x 480 in .JPEG format
  - Video resolution 640 x 480 in .AVI format
  - Warranty for the camera is 2 years

For full microscope specifications and accessories see chapter 1:  
Biological microscopes

MODELS	Digital LCD	Digital mono	Maximum objectives	4/10/S40x objectives	S60x objective	S100x objective	Mechanical X-Y stage	Abbe condenser	LED	NeoLED™	Batteries
MB.1001-LCD	•		3	•					•		•
MB.1051-LCD	•		4	•			•	•	•		•
MB.1055		•	4	•			•	•		•	•
MB.1655		•	4	•	•		•	•		•	•
MB.1155		•	4	•		•	•	•		•	•





## DIGITAL MICROSCOPES



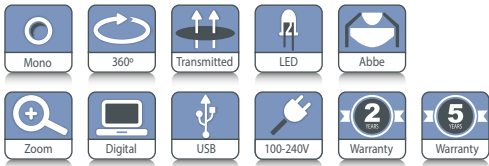
### EcoBlue

digital microscopes  
with built-in  
5.0 MP USB-2.0 camera

Monocular microscopes are equipped with WF 10x/18mm eyepieces, a quadruple nosepiece, achromatic objectives, a 123 x 119 mm stage with two clamps, Abbe condenser and a 1 W LED illumination with integrated 100-240 V power supply. The EcoBlue microscopes can optionally be equipped with a 50 x 30 mm X-Y mechanical stage



● EC.1005



EC.1105 / EC.1605

355 (h) x 270 (w) x 220 mm (d) | 2.6 kg

## HIGHLIGHTS

- Economic microscopes for education
- Monocular and binocular models
- Built-in digital 5.0 MP USB-2.0 camera
- LED illumination
- Built-in 100-240 V power supply
- Ergonomic carrying grip
- 5 Years warranty (2 years on camera)



● EcoBlue supplied with achromatic objectives

## SPECIFICATIONS

### CAMERA

All the EcoBlue digital microscopes are provided with a 5.0 MP 1/2.8" CMOS USB-2.0 camera, a maximum of resolution 2560 x 1920, 24 bits color depth, up to 30 frames per second. Supplied with the ImageFocus Plus software, USB-2.0 cable and a micrometer 1mm/100 slide

### SOFTWARE

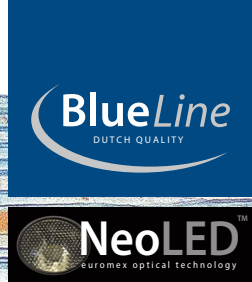
The capture and analysis ImageFocus Plus software allows you to save images in .jpg, .tif, .bmp or .dicom formats as well as .avi format videos. Measurements and annotations can be done on live or captured images. Compatible with Windows 7, 8 and 10, both 32 and 64 bits configurations. A Mac OS version is also available. Free updates can be downloaded from our website

*For full microscope specifications and accessories see chapter 1: Biological microscopes*

MODELS	Monocular	Binocular	4x, 10x, S40x objectives	S60x objective	S100x objective	LED
EC.1005	•		•			•
EC.1105	•		•		•	•
EC.1605	•		•	•		•
EC.1007		•	•			•
EC.1107		•	•		•	•
EC.1607		•	•	•		•



# DIGITAL MICROSCOPES



● BB.4225

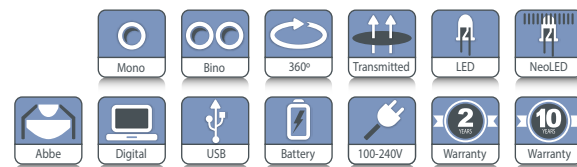
## BioBlue

digital microscopes  
with built-in  
5.0 MP USB-2.0 camera

The WF 10x/18 eyepieces and the semi plan achromatic corrected 45 mm objectives of the BioBlue models generate a crisp high-resolution image

The 120 x 120 mm plain stage and 130 x 130 mm stage with double layered 70 x 28 mm mechanical X-Y stage enable precise and stable positioning of the specimen. With Abbe condenser, NeoLED™ or LED illumination and with built-in rechargeable batteries for corded and cordless use

**BB.4225 / BB.4245 / BB.4255**  
340 (h) x 155 (w) x 230 mm (d) | 3.4 kg  
**BB.4267 / BB.4269**  
360 (h) x 155 (w) x 230 mm (d) | 4.1 kg



## HIGHLIGHTS

- Monocular and binocular models
- Reserved quadruple nosepiece for semi plan objectives
- Built-in digital 5.0 MP USB-2.0 camera
- Integrated mechanical stage
- LED and NeoLED™ illumination
- Cordless operation
- 10 Years warranty (2 years on camera)



● BioBlue digital (binocular head)



● BioBlue digital (monocular head)

## SPECIFICATIONS

### CAMERA

All the BioBlue digital microscopes are equipped with a 5.0 MP 1/2.8" CMOS USB-2.0 camera, a maximum of resolution 2560 x 1920, 24 bits color depth, up to 30 frames per second. Supplied with ImageFocus Plus software, USB-2.0 cable and a micrometer 1mm/100 slide

### SOFTWARE

The capture and analysis ImageFocus Plus software allows to save images in .jpg, .tif, .bmp or .dicom formats as well as .avi format videos. Measurements and annotations can be done on live or captured images. Compatible with Windows 7, 8 and 10, both 32 and 64 bits configurations. A Mac OS version is also available. Free updates can be downloaded from our website

*For full microscope specifications and accessories see chapter 1: Biological microscopes*

MODELS	Mono	Bino	Semi plan 4x, 10x and S40x objectives	Semi plan S60x objective	Semi plan S100x objective	Integrated X-Y stage	1 W LED	NeoLED	Weight (kg)
BB.4205	•		•				•		2.9
BB.4225	•		•			•	•		3.4
BB.4245	•		•	•		•	•		3.4
BB.4255	•		•		•	•	•		3.4
BB.4267		•	•		•	•		•	4.1
BB.4269		•	•			•		•	4.1



## DIGITAL MICROSCOPES

bscope®



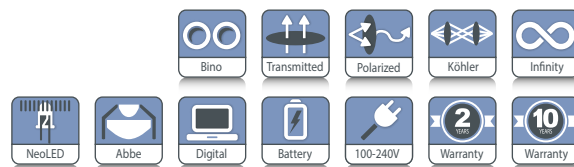
● BS.1157-PLi

### bScope® digital microscopes with built-in 5.0 MP USB-2.0 camera

The versatile and evolutive bScope® microscopes are well-equipped and intensively used in universities, small to mid-sized laboratories and for veterinary applications

The bScope® comes with WF 10x/20 mm eyepieces and is available in binocular models. Complete with E-plan IOS and Plan IOS infinity corrected objectives for brightfield observations

BS.1157-PLi  
409 (h) x 195 (w) x 235 (d) | 7.1 kg



## HIGHLIGHTS

- Binocular model
- Integrated 5.0 MP CMOS color USB.2 camera
- 2592 x 1944 pixels
- 7 frames per second (2592 x 1944 pixels)
- 27 frames per second (1280 x 960 pixels)
- 10 Years warranty (2 years on camera)

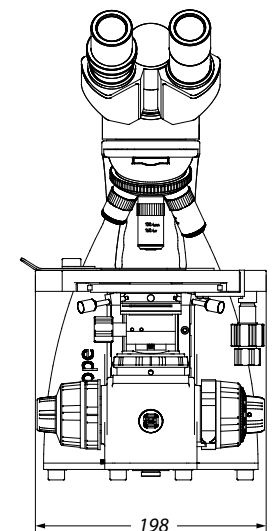
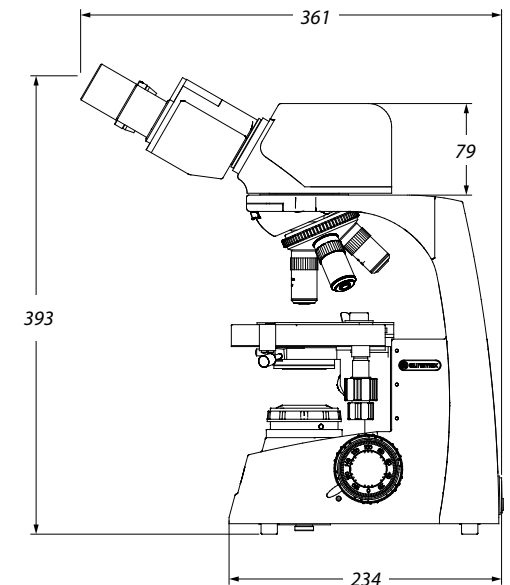
## SPECIFICATIONS

### CAMERA

The digital bScope microscopes are equipped with a 5.0 MP 1/2.5 inch CMOS USB-2.0 camera, 24 bits color depth, 7 frames per second (2592 x 1944 pixels) or 27 frames per second (1280 x 960 pixels). Dynamic range is 76 db and signal/noise ratio 41 db. Supplied with ImageFocus Alpha software, USB-2.0 cable and a micrometer 1mm/100 calibration slide

### SOFTWARE

The capture and analysis ImageFocus Alpha software allows to save images in .jpg, .tif, .bmp or .dicom formats as well as .avi format videos. Measurements and annotations can be done on live or captured images. Compatible with Windows 7, 8 and 10, both 32 and 64 bits configurations. A Mac OS version is also available. Free updates can be downloaded from our website. For full microscope specifications and accessories see chapter 1: Biological microscopes



### MODELS

	binocular head	HWF 10x/20 mm eyepieces	Quintuple nosepiece E-plan IOS 4/10/S40/S100x	Quintuple nosepiece plan IOS 4/10/S40/S100x	Köhler NeoLED™
BS.1157-EPLi	•	•	•		•
BS.1157-PLi	•	•		•	•

All models can optionally be supplied with three AA rechargeable batteries



DIGITAL MICROSCOPES

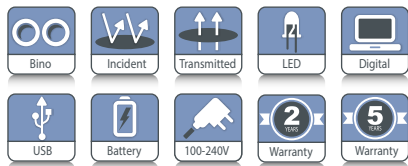


ED.1505-S

EduBlue  
digital microscopes  
with built-in 5.0 MP  
USB-2.0 camera

The EduBlue stereo microscopes are designed specifically for educational purposes and are equipped with WF 10x/20 mm eyepieces, a revolving nosepiece with double or triple magnification objectives

With transmitted and incident 1 W LED illuminations, 60 mm working distance.  
With three internal rechargeable batteries for corded and cordless operation. Supplied with an external power supply



ED.1305-S / ED.1405-S / ED.1505-S / ED.1805-S  
260 (h) x 175 (w) x 220 mm (d) | 2.4 kg



Triple magnification

HIGHLIGHTS

- Economical binocular models
- Dual and triple magnification objectives
- Cordless operation
- Built-in digital 5.0 MP USB-2.0 camera
- LED illuminators
- Ergonomic carrying grip
- 5 Years warranty (2 years on camera)

SPECIFICATIONS

CAMERA

All the EduBlue digital microscopes are provided with a 5.0 MP 1/2.8" CMOS USB-2.0 camera, a maximum of resolution 2560 x 1920, 24 bits color depth, up to 30 frames per second. Supplied with the ImageFocus Plus software, USB-2.0 cable and a micrometer 1mm/100 slide

SOFTWARE

The capture and analysis ImageFocus Plus software allows to save images in .jpg, .tif, .bmp or .dicom formats as well as .avi format videos. Measurements and annotations can be done on live or captured images. Compatible with Windows 7, 8 and 10, both 32 and 64 bits configurations. A Mac OS version is also available. Free updates can be downloaded from our website

For full microscope specifications and accessories see chapter 2: Stereo microscopes

MODELS

	Binocular	1x/ 3x objectives	2x/ 4x objectives	1x/ 2x/ 3x objectives	1x/ 2x/ 4x objectives	Rack & pinion stand
ED.1305-S	•	•				•
ED.1405-S	•		•			•
ED.1505-S	•			•		•
ED.1805-S	•				•	•



# DIGITAL MICROSCOPES

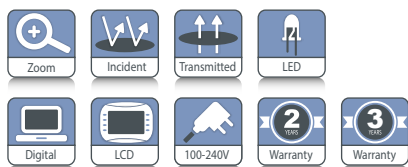
BlueLine  
DUTCH QUALITY

## EduBlue LCD digital microscope with built-in 2.0 MP camera

The EduBlue LCD microscope is built around one 1 to 4 times zoom objective and enables observation of all kinds of objects directly on a 9" LCD screen. These kinds of microscopes are well-suited for education

The EduBlue LCD is equipped with a built-in 2 MP high definition CMOS camera with 1920 x 1080 pixels

ED.3000



ED.3000  
425/475 (h) x 180 (w) x 230 mm (d) | 2.3 kg



Adjustable screen

## SPECIFICATIONS

### CENTRAL ZOOM OBJECTIVE

The EduBlue LCD ED.3000 features a single optical zoom objective with a 1 to 4x zoom magnification. Zoom adjustments engravings on 1, 1.5, 2, 3 and 5x. The working distance is 91 mm. A digital zoom up to 10x is available within the software

### STAND

The central Zoom Objective with attached screen and LED ring light is mounted on a rack and pinion system that sits on a 30 x 180 mm metal stand

### ILLUMINATION

Two types of illumination are available;

- An integrated 21 LED incident ring light illumination (5.500 K) with five intensity positions
- A 7 LED transmitted illumination (5.785 K) with two intensity positions, integrated in the base

## HIGHLIGHTS

- MonoZoom stand-alone digital microscope
- Zoom 1x up to 4x
- 91 mm working distance
- Built-in 21 LED incident ring light, five intensity positions
- Built-in 7 LED transmitted, two intensity positions
- Built-in 2 MP HD camera
- HD 9-inch screen
- Removable 8 GB SD card
- Metal stand
- 3 years warranty (2 years on camera)

### BUILT-IN CAMERA

Built-in HD 2 MP CMOS high speed camera with attached 9" screen. There is one USB port for a max. 16 GB SD storage card for captured images. The operator can take and save images to the SD card by pressing on a capture button at the left side of the screen. Images are saved in the .jpg format and videos are saved in .avi format

### BUILT-IN SOFTWARE

The built-in on screen software is driven by the supplied computer mouse and features functions such as Capture image, Freeze image, Automatic white balance, Automatic exposition, File manager, Grids. Also camera settings such as Exposure time, Gain, Saturation, Contrast, Sharpness and HDR

### PACKAGE CONTENT

Supplied with 16 GB SD card, black/white object plate, a glass transparent object plate and two external 12V / 3.3 A power supplies



# MACROZOOMS

## MZ series

## HIGHLIGHTS

- Stand-alone
- Zoom semi-apochromatic objective
- Zoom up to 0.7x to 4.5x
- C-mount with 0.4x objective
- 105 mm working distance
- Without illumination
- Metal stand
- 3 years warranty

## MZ.4500

### macrozoom

The high-end MacroZoom is built around one 0.7 to 5 times optical zoom objective and must be used in combination with C-mount types of cameras with a HD screens or computer screens. With a working distance of 105 mm it is highly suitable for repairs, tooling engineers and visual inspections

A standard heavy metal base makes the whole system very stable for adding all kinds of illumination systems and camera systems

## SPECIFICATIONS

### CENTRAL ZOOM OBJECTIVE

The MacroZoom MZ.4500 features a single optical zoom objective with a 0.7x to 4.5x zoom magnification. Zoom adjustments engravings on 1, 1.5, 2, 3 and 4.5x. The working distance is 105 mm

### STAND

The MacroZoom is mounted on a 230 mm height pillar (Ø 32 mm) and holder (Ø 39/50 mm) that sits on a metal 320 x 260 x 16/25 mm metal stand

### CAMERA SYSTEMS

Any of our digital C-mount cameras (in this chapter) can be used together with the MacroZoom

### PACKAGING

Supplied with dust cover and packed in styrofoam

• The MZ.4500 in combination with the VC.3036

**MZ.4500**  
31.3 (h) 32 (w) 28.5mm (d) | 3.06 kg



USB CAMERAS

CAMERA FOR  
EDUCATION

USB CAMERAS

CAMERAS FOR  
EDUCATION



CMEX entry level USB-2.0 cameras  
with CMOS sensor

The CMEX-1 is equipped with a CMOS sensor.  
Supplied with ImageFocus 4 software

Besides capturing images and videos, the software allows  
measurements on still and live images and annotations on  
captured images. Compatible with Windows 7, 8 and 10,  
both 32 and 64 bits configurations. A Mac OS Light version is  
also available for capturing images only



MODEL	Number of pixels (MP)	Sensor	Pixels size (µm)	Resolutions	Max. frames (p/sec)	Grayscale conversion	Color rendering	Signal/ Noise(db)	Dynamic (db)	Sensitivity V/lux-sec (at 550 nm)	Product number
CMEX-1	1.3	1/2.5" CMOS	2.2 x 2.2	1272 x 952 632 x 472	15 30	10 bits	24 bits	55	72	1.3	DC.1300c

The CMEX-1 (DC.1300c) camera is supplied with a 0.45x C-mount objective

The CMEX-2f, CMEX-5f and CMEX-12f are equipped  
with a fast CMOS sensor. The CMEX cameras are  
equipped with USB-2.0 data interface and supplied  
with ImageFocus Plus software

CMEX USB-2.0 cameras  
with fast CMOS sensor

Besides capturing images and videos, the software allows  
measurements on still and live images and annotations on  
captured images. Compatible with Windows 7, 8 and 10,  
both 32 and 64 bits configurations. A Mac OS version is also  
available. Free updates can be downloaded from our website

MODELS	Number of pixels (MP)	Sensor	Pixels size (µm)	Resolutions	Max. frames (p/sec)	Grayscale conversion	Color rendering	Dynamic (db)	Sensitivity V/lux- sec (at 550 nm)	Product number
CMEX-2f	2.0	1/2.9" CMOS	2.8 x 2.8	1920 x 1080	30	8 bits	24 bits	72	0.51	DC.2000f
CMEX-5f	5.0	1/2.8" CMOS	2.0 x 2.0	2560 x 1920 1600 x 1200	30 50	8 bits	24 bits	72	2.0	DC.5000f
CMEX-12f	12.0	1/2.3" CMOS	1.33 x 1.33	4000 x 3000 2592 x 1944	15 30	8 bits	24 bits	60	1.5	DC.12000f

The CMEX cameras are supplied with USB-2.0 cable, 30.0 and 30.5 mm to 23.2 mm conversion adapters for use with stereo microscopes and a 1 mm/100 (10 µm/division) calibration slide. The cameras are supplied with a 0.45x C-mount objective





USB CAMERAS

ADVANCED  
CAMERAS FOR  
EDUCATION

FEATURED

USB CAMERAS

SCIENTIFIC  
GRADE CAMERAS  
FOR EDUCATION

FEATURED



● CMEX-18 Pro



● sCMEX

## Advanced CMEX USB-3.0 cameras with CMOS sensor

The CMEX-3 Pro, -5 Pro, -10 Pro and -18 Pro cameras are equipped with a 3.1, 5.1, 10 or 18 MP CMOS sensor with 12 bits grayscale conversion and a 24 bits color rendering. These cameras are equipped with a USB-3.0 data interface enabling fast frame rate and are supplied with ImageFocus Alpha software

Besides capturing images and videos, the software allows measurements on still and live images and annotations on captured images. Compatible with Windows 7, 8 and 10, both 32 and 64 bits configurations. A 2 GB RAM 2.8 GHz computer and 17 inch display is recommended. A Mac OS version is available. Free updates can be downloaded from our website

MODELS	Sensor	Sensor size (inch)	Pixels size (µm)	Exposure time	Resolutions	Max. frames (p/sec)	Signal/ Noise (db)	Dynamic (db)	Sensitivity V/lux-sec	Product number
CMEX-3 Pro	CMOS	1/3"	2.2 x 2.2	1 ms ~ 2000 ms	2048 x 1534 1024 x 770	28 53	39	100	1.9	DC.3000-PRO
CMEX-5 Pro	CMOS	1/2.5"	2.2 x 2.2	1 ms ~ 2000 ms	2560 x 1922 1270 x 960 640 x 480	14 39 100	39	68.	1.76	DC.5000-PRO
CMEX-10 Pro	CMOS	1/2.3"	1.67 x 1.67	1 ms ~ 2000 ms	3584 x 2746 1792 x 1372	8 25	35.5	63.5	0.31	DC. 10000-PRO
CMEX-18 Pro	CMOS	1/2.3"	1.25 x 1.25	1 ms ~ 2000 ms	4912 x 3684 2456 x 1842 1228 x 922	6 18 32	42	65	1.3	DC. 18000-PRO

The CMEX-3 Pro, -5 Pro, -10 Pro and -18 Pro cameras are supplied with USB-3.0 cable, 30.0 and 30.5 mm adapters to use with stereo microscopes, 1 mm/100 (10 µm/division) calibration slide. The CMEX-5 Pro, -10 Pro and -18 Pro are supplied with a 0.5x C-mount objective. The CMEX-3 Pro is supplied with a 0.37x C-mount objective

## sCMEX USB-3.0 cameras with scientific grade sCMOS sensor

The sCMEX-3, sCMEX-6 and sCMEX-20 cameras are equipped with a scientific grade back illuminated Sony sCMOS sensor with 16 bits grayscale conversion and an outstanding 36 bits color rendering. Suitable for brightfield, darkfield and fluorescence. The sCMEX cameras are equipped with a USB-3.0 data interface and supplied with ImageFocus Alpha software

Besides capturing images and videos, the software allows measurements on still and live images and annotations on captured images. Compatible with Windows 7, 8 and 10, both 32 and 64 bits configurations. Also compatible with Mac OS. PC requirements: Intel Core2 2.8 GHz or higher or equivalent, 2 GB memory, USB-3.0 port, 17 inch display. Free updates can be downloaded from our website

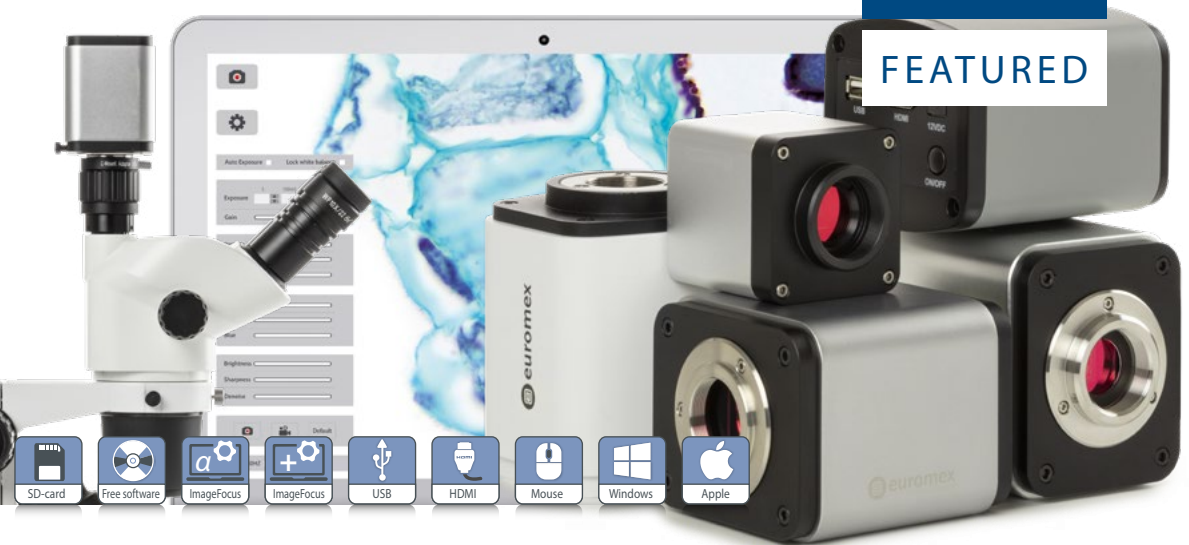
MODELS	Number of pixels (MP)	Sensor	Sensor size (inches)	Pixels size (µm)	Exposure time	Resolutions	Max. frames (p/sec)	Color rendering	Sensitivity V/lux-sec	Product number
sCMEX- 3	3.1	sCMOS	1/2.8"	2.5 x 2.5	0.244 ~ 15000 ms	2048 x 1536 1920 x 1080	50 58	36 bits	0.15	DC.3000s
sCMEX- 6	6.3	sCMOS	1/1.8"	2.5 x 2.5	0.244 ~ 15000 ms	3072 x 2048 1536 x 1024	30 38	36 bits	0.15	DC.6000s
sCMEX-20	20.0	sCMOS	1"	2.4 x 2.4	0.264 ~ 15000 ms	5440 x 3648 2736 x 1824 1824 x 1246	15 50 60	36 bits	0.21 0.21 0.21	DC.20000s

The sCMEX cameras are supplied in a carton box with USB-2.0 cable, 30.0 and 30.5 mm to 23.2 mm conversion adapters for use with stereo microscopes, 1 mm/100 (10 µm/division) calibration slide. The DC.3000s and DC.6000s are supplied with a 0.5x objective and the DC.20000s is supplied with a 1.0x adapter

# HD AND HD-AUTOFOCUS CAMERAS

HIGH DEFINITION  
CAMERAS  
FOR EDUCATION

FEATURED



## High definition HD1080p

and 720p CMOS color cameras  
with HDMI and USB-2.0/3.0 interfaces

The Euromex UHD-4K, HD-Ultra, HD-Lite, HD-Mini and HD-Autofocus cameras offer the perfect solution to modern microscopy where real-time images are needed. These HD image quality cameras can be used with biological, metallurgical or stereo microscopes

The cameras are equipped with high sensitive sensors for low and intense light conditions and are also suitable for coaxial illumination and machine vision applications. The real-time images generated with this camera provide excellent color rendering with frame speeds up to 60 fps

### STAND-ALONE MODE

To use these cameras you do not need a computer or have any computer knowledge. Most camera settings are done automatically and therefore these cameras are very user- friendly. This results in faster, more flexible and compact working conditions. Simply connect the camera to a high definition dedicated 11.6" HD screen, TV-HD or HD-beamer with a HDMI

input and the system is ready to go. The UHD-4K camera can also be connected to a GbE ethernet and DHCP enabled network router and has also a WiFi interface. The mouse driven built-in software of the camera enables captured images and recorded videos\* to be saved on the integrated SD memory card

With the UHD-4K, HD-Ultra, HD-Lite and HD-Autofocus cameras, the captured images or recorded video's\* can be very easily reviewed or replayed on the HD screen. The UHD-4K and HD-Ultra even offer a full range of measuring functions on live and captured images. The HD-Autofocus offers measuring functions on live image only  
\* video function only available with UHD-4K (.mp4), HD-Ultra (.avi) and HD-Lite (.avi) cameras

### COMPUTER CONTROLLED MODE

Users who want more camera controls and more functions can also connect the camera to a computer and benefit from the extensive functions of the Euromex ImageFocus software. It runs

## HIGHLIGHTS

- UHD 2160p, HD 1080p or 720p high definition color cameras
- Real-time images directly on TV, monitor or beamer
- Stand-alone or computer controlled mode
- Built-in mouse-driven software and SD memory card
- C-mount interface
- HDMI, USB-2.0/3.0, GbE and WiFi interface(s)
- Autofocus model available
- Compatible with ImageFocus software

on Windows 7, 8 and 10, both 32 and 64 bits. Euromex supplies free software updates on [www.euromex.com](http://www.euromex.com). Besides extended camera settings, the software can save images in JPG, TIFF or BMP formats and record videos in .avi format on the hard disk of the computer. The software offers different measurement functions on live and captured images and also full control over the camera parameters. Specific functions for fluorescence - such as histogram adjustments and combining captured fluorescence images - are also available with the ImageFocus software



VC.3036-HDS on stereo microscope



## PACKAGE CONTENT

MODELS	UHD-4K	HD-Ultra	HD-Lite	HD-Mini	HD-Autofocus	HD-Pro
Software	ImageFocus Alpha	ImageFocus Plus	ImageFocus Plus	--	--	ImageFocus Alpha
Software languages	15 <sup>(2)</sup>	6 <sup>(1)</sup>	6 <sup>(1)</sup>	English	15 <sup>(2)</sup>	15 <sup>(2)</sup>
Compatible	Win 7, 8 and 10 Mac OS	Win 7, 8 and 10 Mac OS	Win 7, 8 and 10 Mac OS	--	--	Win 7, 8 and 10 Mac OS
C-mount with objective	0.5x	0.37x	0.45x	0.37x	0.5x	0.37x
Interface(s)	•	•	•	Only HDMI	•	•
30 and 30.5 mm adapters	•	•	•	•	•	•
SD card	16 GB	8 GB	4 GB	16 GB	16 GB	16 GB
Calibration slide 10mm/100	•	•	•	•	•	•
External power supply	12V 1A	12V 2A	12V 2A	12V 1A	12V 1A	12V 1A
Dimensions (w x d x h)	78 x 65 x 98	80 x 70 x 90	80 x 70 x 90	50 x 50 x 60	81 x 65 x 78	81 x 65 x 78
Weight (grams)	555	440	280	150	500	500
Product number	VC.3040	VC.3036	VC.3031	VC.3020	VC.3034	VC.3038
With 11.6" HD screen	VC.3040-HDS	VC.3036-HDS	VC.3031-HDS	VC.3020-HDS	VC.3034-HDS	VC.3038-HDS

<sup>(1)</sup> One language can be selected during initial installation of the ImageFocus Plus software: English, German, French, Dutch, Spanish and Russian

<sup>(2)</sup> English, Catalan, French, German, Indonesian, Italian, Japanese, Korean, Polish, Russian, Simplified Chinese, Spanish, Thai, Traditional Chinese, Turkish



ALL HD-CAMERAS

MODELS	UHD-4K	HD-Ultra	HD-Lite	HD-Mini	HD-Autofocus	HD-Pro HDMI
Sensor	Sony 4K	Sony	Aptina	Aptina	Sony	Sony
Format	1/1.8", HDTV 2160p	1/2.8", HDTV 1080p	1/2.5", HDTV 1080p	1/3", HDTV 720p	1/1.9", HDTV 1080p	1/2.8", HDTV 1080p
Pixels	3840 x 2160 <sup>(1)</sup> HDMI 60 fps USB 30 fps	3264 x 1836 <sup>(1)</sup> 1920 x 1080 <sup>(2)</sup> HDMI 60 fps USB 30 fps	2592 x 1944 <sup>(1)</sup> 1920 x 1080 <sup>(2)</sup> HDMI 15 fps, USB 15fps	1280 x 720 <sup>(1)</sup> 1280 x 720 <sup>(2)</sup> HDMI 30 fps	1920 x 1080 <sup>(1)</sup> HDMI 60 fps	1920 x 1080 <sup>(1)</sup> 1920 x 1080 <sup>(2)</sup> HDMI 60 fps, USB 26 fps
Pixel size	2.0 x 2.0 (µm)	2.8 x 2.8 (µm)	2.2 x 2.2 (µm)	3.75 x 3.75 (µm)	3.75 x 3.75 (µm)	2.9 x 2.9 (µm)
Video recording	2160p	1080p	1080p	--	1080p	1080p
Video output	HDMI, USB-3.0 <sup>(3)</sup> , GbE ethernet, WiFi <sup>(5)</sup>	HDMI, USB-2.0	HDMI, USB-2.0	HDMI	HDMI, USB-C <sup>(3)</sup>	HDMI, USB-2.0
Scan mode	Progressive	Progressive	Progressive	Progressive	Progressive	Progressive
Exposure	Automatic/ manual	Automatic/ manual	Automatic/ manual	Automatic/ manual	Automatic/ manual	Automatic/ manual
White balance	Automatic/ manual/ROI	Automatic/ manual	Automatic/ manual	Automatic/ manual	Automatic/ manual	Automatic/ manual/ROI
Sensitivity lux-sec	505 mV	510 mV	1 V	6.5 V	1.12 V (1/30s)	1.3 V (1/30s)
Color rendering (bits)	36	36	24	24	24	24
Signal/Noise (db)	44	55	40.5	44	50	38
Dynamic (db)	--	69	60	85	65	66
Storage	16 GB SD card (max. 32 GB)	8 GB SD card (max. 32 GB)	4 GB SD card (max. 32 GB)	16 GB SD card (max. 32 GB)	16 GB SD card (max. 32 GB)	16 GB SD card (max. 32 GB)
Camera buttons	on/off	on/off	on/off	--	on/off	on/off
Mounting	C-mount	C-mount	C-mount	C-mount	C-mount	C-mount
External power supply	100-240 Vac to 12Vdc/1A	100-240 Vac to 12Vdc/2A	100-240 Vac to 12Vdc/2A	100-240 Vac to 12Vdc/1A	100-240 Vac to 12Vdc/2A	100-240 Vac to 12Vdc/2A
Relative humidity	10-60 %	45-85 %	45-85 %	30-80 %	45-85%	30~80%
Temperature Operation Storage	-10 – 50° C -20 to 60° C	0 – 60° C -20 to 70° C	0 – 60° C -20 to 70° C	-10 – 40° C -20 to 60° C	-10-40° C -20°C to 60° C	-10~ 50° C -20°C to 60° C
Product number	VC.3040 VC.3040-HDS <sup>(4)</sup>	VC.3036 VC.3036-HDS <sup>(4)</sup>	VC.3031 VC.3031-HDS <sup>(4)</sup>	VC.3020 VC.3020-HDS <sup>(4)</sup>	VC.3034 VC.3034-HDS <sup>(4)</sup>	VC.3038 VC.3038-HDS <sup>(4)</sup>

BUILT-IN SOFTWARE FEATURES (HDMI MODE)

MODELS	UHD-4K	HD-Ultra	HD-Lite	HD-Mini	HD-Autofocus	HD-Pro HDMI
Image capturing (JPEG)	3840 x 2160	3261 x 1840	2592 x 1944	1280x720	1920 x 1080	1920 x 1080
Video recording	3840 x 2160 MP4	1920 x 1080 AVI	1920 x 1080 AVI	--	1920 x 1080 ASF	1920 x 1080 ASF
Browse saved images	•	•	•	--	•	•
Browse saved video's	•	•	•	--	no	•
SD card storage	16 GB	8 GB	4 GB	16 GB	16 GB	16 GB
Mouse driven	•	•	•	•	•	•
Auto exposure	•	•	•	•	•	•
Exposure time	0.04 ~ 1000 ms	0.001s ~ 10 s	0.001s ~ 10 s	0.2 ~ 2000 ms	0.06 ~ 918 ms	0.036 ~ 8000 ms
Gain	•	•	•	•	•	•
RGB & white balance	•	•	•	•	•	•
Gamma	•	•	•	•	•	•
Sharpness	•	•	•	•	•	•
Noise reduction	3D algorithm	3D algorithm	3D algorithm	Standard	Standard	Standard
Saturation & contrast	•	•	•	•	•	•
Horiz. & vert. flip	•	•	•	•	•	•
Grids	cross/multi	cross/multi	multi	multi	multi	User defined
Autofocus	--	--	--	--	•	--
Compare function	•	•	•	--	•	•
Measurement functions	captured & live images	captured & live images	--	--	live image only	captured & live images
Calibration table	•	•	--	--	•	•
Line & free curve	•	•	--	--	•	•
Polygon & rectangle	•	•	--	--	•	•
Angle	•	•	--	--	•	•
Circle 3 points	•	•	--	--	•	•
Circle radius	•	•	--	--	•	•
Export function	CSV	CSV, Txt	--	--	CSV	CSV
Languages	5 <sup>(2)</sup>	8 <sup>(1)</sup>	8 <sup>(1)</sup>	--	5 <sup>(2)</sup>	5 <sup>(2)</sup>
Product number	VC.3040 VC.3040-HDS	VC.3036 VC.3036-HDS	VC.3031 VC.3031-HDS	VC.3020 VC.3020-HDS	VC.3034 VC.3034-HDS	VC.3038 VC.3038-HDS

<sup>(1)</sup> capture mode <sup>(2)</sup> live view <sup>(3)</sup> USB-2.0 compatible <sup>(4)</sup> model with attached high definition screen <sup>(5)</sup> available from November 2019

<sup>(1)</sup> English, simplified Chinese, traditional Chinese, German, Italian, French, Japanese, Korean

<sup>(2)</sup> English, Simplified Chinese, Traditional Chinese, Korean and Thai



WIFI CAMERA

WIFI  
CAMERAS

FEATURED

COOLED CAMERAS

COOLED  
CAMERAS FOR  
EDUCATION



## CMEX-WiFi 5.0 MP

digital WiFi camera with  
1/2.5 inch CMOS sensor

The CMEX-WiFi 5 camera is equipped with a 5.0 MP CMOS sensor with 12 bits grayscale conversion and a 24 bits color rendering

The CMEX camera streams H.264 encoded high resolution images simultaneously to several WiFi enabled smartphones, tablets or computers with iOS, Android or Windows operating systems

Power supply through USB charger or computer USB port. Standard C-mount mounting

Adding a WiFi camera to your microscope is ideal for wireless sharing/viewing of microscope images. Ideal for demonstrations where remote viewing is needed

Android app for this camera is supplied on cd-rom and [www.euromex.com](http://www.euromex.com). IOS app can be downloaded from the App store (free of charge). ImageFocus Alpha software can be used by means of WiFi on PC's and Macs

The camera is powered by the included USB charger or a computers USB port. Standard 0.45x C-mount objective is included

MODEL	Sensor	Sensor size (inches)	Pixels size (µm)	Resolutions	Grayscale conversion	Color rendering	Signal/ Noise(db)	Dynamic (db)	Sensitivity V/lux-sec	Product number
CMEX-WiFi 5	CMOS	1/2.5"	2.2 x 2.2	1280 x 720	12 bits	24 bits	43	61	1.0	DC. 5000-WiFi

The CMEX-WiFi 5 camera is supplied in a box with USB-2.0 cable, 30.0 and 30.5 mm adapters to use with stereo microscopes, and a 0.45x C-mount objective



● DC.20000i and DC.6000i

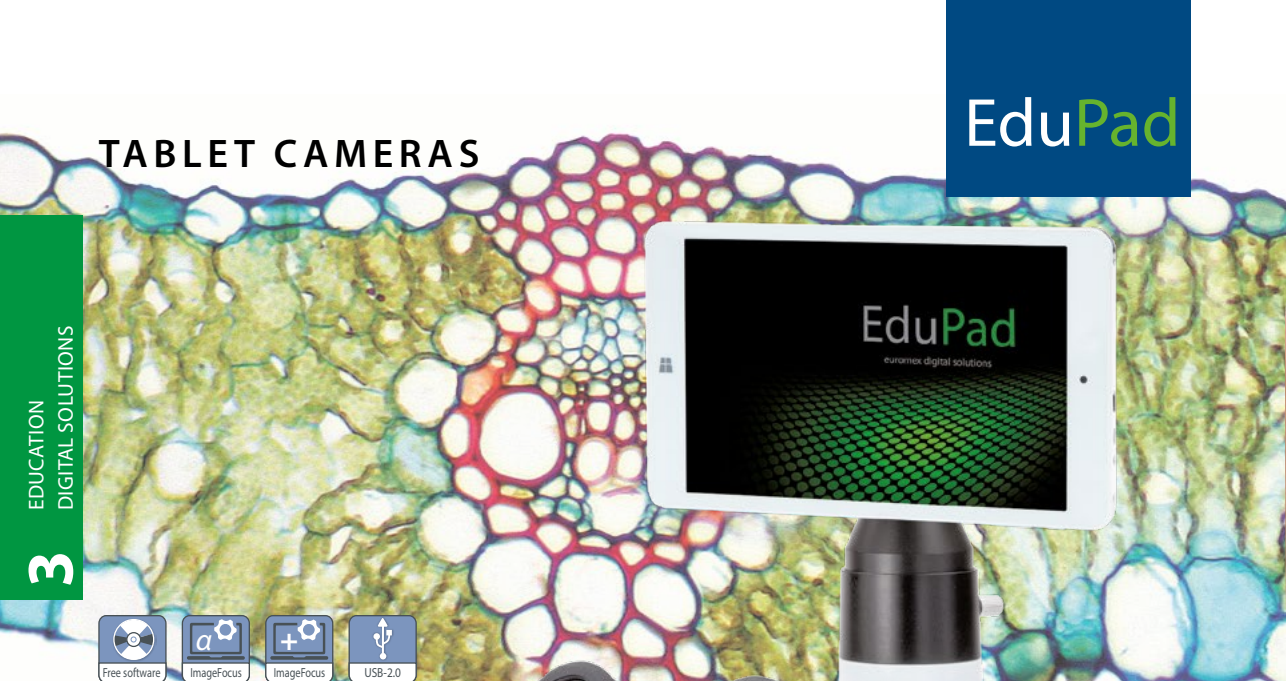
## Cooled color camera with CCD or CMOS sensor

The Euromex 6 and 20 Megapixel Peltier cooled cameras are equipped with Peltier cooling elements that allow the camera to be used for fluorescence and other low light applications. These advanced and premium models are supplied with a USB-3.0 interface

All cameras are supplied with ImageFocus Alpha software. The software has specific functions for fluorescence like combining capture fluorescence images. Furthermore it allows capturing of images and videos, doing measurements and annotations, generating reports, live image stitching etc. Compatible with Windows 7, 8 and 10, both 32 and 64 bits configurations. A Mac OS version is also supplied (with a few differences in features)

MODELS	Number of pixels (MP)	Sensor	Pixel size (µm)	Resolutions	Max. frames (p/sec)	USB-3	Sensitivity @ 1/30 sec	Peltier cooling
DC.6000i	6	1" CCD	4.54 x 4.54	2748 x 2200	7.5	•	880 mV	•
				2748 x 1092	14			
DC.20000i	20	1" CMOS	2.4 x 2.4	5440 x 3648	5	•	462 mV	•
				4096 x 2160	10			
				2736 x 1824	15			
				1824 x 1216	30			





## TABLET CAMERAS

EduPad



## EduPad tablet with microscope camera

The EduPad tablet with a 8 inch display can be supplied with a 2.1 MP, 5.1 MP, 12.0 MP or a WiFi camera. Together with the ImageFocus Plus or ImageFocus Alpha software it offers a state-of-the-art solution for modern microscopy for education



● EduPad in case

### SOFTWARE

EduPad USB camera is supplied with ImageFocus Plus software and EduPad with WiFi camera is supplied with ImageFocus Alpha. The WiFi camera can also be operated through IOS and Android apps



● EduPad, detachable, take it anywhere

## SPECIFICATIONS

Processor	Quad Core 1.33 GHz with HD graphics processor
Screen	screen 1920 x 1200 touchscreen, 16:10, LED backlight
Memory	2 GB DDR3 RAM
Storage	32 GB flash SDD, Micro SD/SDHC cards up to 64 GB
Webcam	Front and rear cameras
Connectivity	USB-C, Wi-Fi 802.11 b/g/n and Bluetooth 4.0
Audio	Stereo with 3.5 mm audio jack and built-in microphone and speaker
Battery	Lithium
Housing	approx. 21 x 12 x 9 cm
Weight	approx. 0.4 kg
System	Windows 10 Home

Specifications can be changed by Euromex microscopen bv without notice

MODELS	Camera (MP)	Sensor size	Resolution	Pixels size (µm)	ADC	Color rendering	Dynamic (db)	Sensitivity V/lux-sec	Interface	Product number
EduPad-2	2.1	1/2.9"	1920 x 1080	2.8 x 2.8	12 bits	24 bits	--	0.51	Windows USB 2.0	EP.2000f
EduPad-5	5.1	1/2.8"	2592 x 1920	2.0 x 2.0	12 bits	24 bits	72 db	2.0	Windows USB 2.0	EP.5000f
EduPad-12	12.0	1/2.3"	4072 x 3176	1.33 x 1.33	8 bits	24 bits	60 db	--	Windows USB 2.0	EP.12000f
EduPad-WiFi	5	1/2.5"	1280 x 720	2.2 x 2.2	12 bits	24 bits	61 db	1.0	Windows Apple Wi-Fi Android	EP.5000-WiFi

All EduPad models are supplied with a C-mount objective that fits the standard 23.2 mm trinocular tubes. The EP.2000f, EP.5000f and EP.12000f are supplied with ImageFocus Plus software. The EP.5000-WiFi is supplied with ImageFocus Alpha. Only suitable for straight photo tubes

## HIGHLIGHTS

- 8" Tablet with microscope camera
- 1280 x 800 pixels touch screen
- Full Windows 10 Home
- ImageFocus Plus software for PC
- ImageFocus Alpha for WiFi enabled PC and Android devices
- Tablet can be fully detached from camera





TABLET CAMERAS

ProPad



ProPad tablet  
with microscope camera and  
keyboard-docking station

The ProPad Full HD (1280x800) display reveals bright colors and crisp images. The ProPad consists of a high quality microscope camera system and a fully detachable tablet running the latest ImageFocus version. You can take it anywhere

Together with the included attachable keyboard, you can use it as a microscope imaging system, tablet and laptop. The keyboard connects to the tablet using magnets to provide a latchless docking solution that lets you smoothly remove and re-attach the keyboard to the ProPad

SOFTWARE

ProPad-2, ProPad-5 and ProPad-12 are supplied with ImageFocus Plus. ProPad-WiFi is supplied with ImageFocus Alpha. The WiFi camera can also be operated through IOS and Android apps



HIGHLIGHTS

- 10.1" Tablet with microscope camera
- 1280 x 800 pixels HD touch screen
- Windows 10 Home
- ImageFocus Plus software for PC
- ImageFocus Alpha for WiFi enabled PC and Android devices
- Tablet can be fully detached from camera
- Including keyboard
- The snap-on keyboard uses a magnetic docking system



ProPad and keyboard-docking station

SPECIFICATIONS

Processor	Quad Core 1.92 GHz with HD graphics processor
Screen	10.1 inch, 1280 x 800 (WGXA) touchscreen, 16:10, LED backlight
Memory	2 GB DDR RAM, 2 MB cache
Storage	32 GB Flash HDD, micro SD/SDHC up to 64 GB
Webcam	2 MP, 1600 x 1200 pixels front and rear cameras
Connectivity	Micro USB 2.0, WiFi 802.11 b/g/n and Bluetooth 4.0
Audio	Stereo with 3.5 mm audio jack, internal microphone and speaker
Battery	Lithium
Housing	246.9 x 174.2 x 9.4 mm (tablet), 246.9 x 174.2 x 8.2 mm (keyboard)
Weight	588 grams (tablet), 551 grams (keyboard)
System	Windows 10 Home
Supplied with	Keyboard-docking station

Specifications can be changed by Euromex microscopen bv without prior notice

MODELS	Camera (MP)	Sensor size	Resolution	Pixels size (µm)	ADC	Color rendering	Dynamic (db)	Sensitivity V/lux-sec	Interface	Product number
ProPad-2	2.1	1/2.9"	1920 x 1080	2.8 x 2.8	12 bits	24 bits	--	0.51	Windows USB 2.0	PP.2000f
ProPad-5	5.1	1/2.8"	2592 x 1920	2.0 x 2.0	12 bits	24 bits	72 db	2.0	Windows USB 2.0	PP.5000f
ProPad-12	12.0	1/2.3"	4072 x 3176	1.33 x 1.33	8 bits	24 bits	60 db	--	Windows USB 2.0	PP.5000f
ProPad-WiFi	5.0	1/2.5"	1280 x 720	2.2 x 2.2	12 bits	24 bits	61 db	1.0	Windows Apple WiFi Android	PP.5000-WiFi

All ProPad models are supplied with a C-mount objective that fits the standard 23.2 mm trinocular tubes. The PP.1300c is supplied with ImageFocus 4, the PP.2000f, PP.5000f and PP.12000f are supplied with ImageFocus Plus software. The PP.5000-WiFi is supplied with ImageFocus Alpha. Only suitable for straight photo tubes



# SOFTWARE

The software is compatible with all cameras mentioned in table below. Besides live imaging the software captures images in .jpeg, .tif, .bmp or .dicom formats or video recording in .avi format

IMAGE FOCUS 4	
DC.1300c	

IMAGE FOCUS PLUS	
DC.2000f	VC.3036
DC.5000f	VC.3031
DC.12000f	

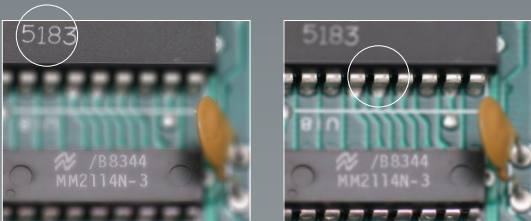
IMAGE FOCUS ALPHA	
DC.3000-Pro	DC.5000-WiFi
DC.5000-Pro	DC.3000s
DC.10000-Pro	DC.6000s
DC.18000-Pro	DC.20000s
VC.3038	

## IMAGE STITCHING

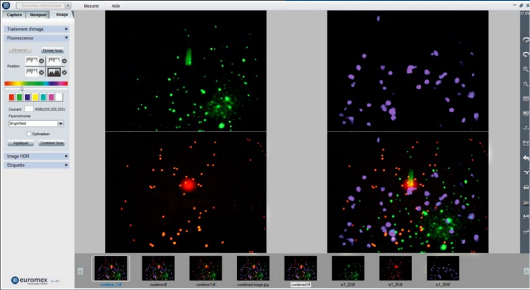
Image stitching is the process of combining multiple images with overlapping fields of view to produce one image

## EXTENDED DEPTH OF FOCUS

"The extended depth of focus" function in the ImageFocus Alpha software or "stacking software, allows to combine a number of digital images of a object, focused at different focus planes, into one final image with much greater depth of field (see illustration below)



FREE UPDATES  
AVAILABLE ON  
EUROMEX.COM



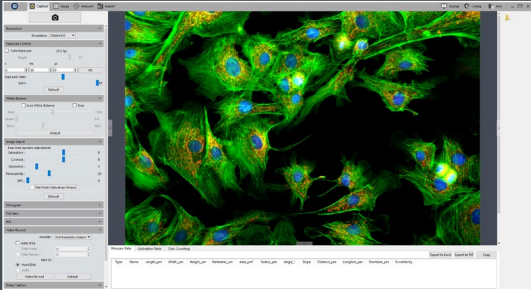
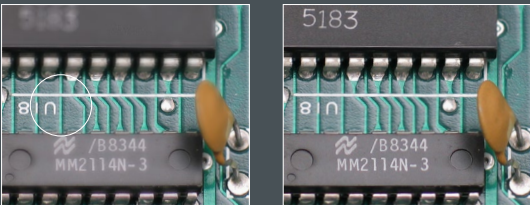
## ImageFocus 4 software

ImageFocus 4 has a wide range of functions:

- Measurements can be done on still and live image
- Images can be saved in .jpg, .tif, .bmp or .dicom formats as well as .avi format videos
- The brightness, contrast and saturation of captured images can be adjusted
- Camera parameters for exposure time, white balance and color control are easily accessible
- The software also has specific functions for fluorescence such as combining captured fluorescence images
- Compatible with Windows 7, 8 and 10, both 32 and 64 bits configuration. A Mac OS Light version is also available for capturing images\*
- PC requirements: Intel Core2 2.8 GHz or higher or equivalent, 2GB memory or more, 17" screen

\* Mac version not available for VC Series

One language can be selected during initial installation of the ImageFocus 4 software: English, German, French, Dutch, Spanish and Russian

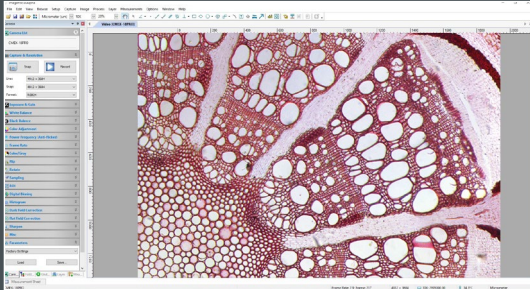


## ImageFocus Plus software

ImageFocus Plus has a wide range of functions:

- Measurements can be done on still and live image
- Images can be saved in .jpg, .tif, .bmp or .dicom formats as well as .avi and mpeg-4 format videos
- The brightness, contrast and saturation of captured images can be adjusted
- Camera parameters for exposure time, white balance and color control are easily accessible
- The software also has specific functions for fluorescence such as combining captured fluorescence images
- Compatible with Windows 7, 8 and 10, both 32 and 64 bits configuration. A Mac OS version is also available
- PC requirements: Intel Core2 2.8 GHz or higher or equivalent, 2 GB memory or more, 17" screen

ImageFocus Plus software features English, German, French, Dutch, Spanish and Russian



## ImageFocus Alpha software

ImageFocus Alpha has a wide range of functions:

- Measuring, segmentation & counting, stichting of images, extended depth of focus, etc
- Images can be saved in .jpg, .tif, .bmp or .dicom formats as well as .avi format videos
- The brightness, contrast and saturation of captured images can be adjusted
- Camera parameters for exposure time, white balance and color control are easily accessible
- The software also has specific functions for fluorescence such as combining captured fluorescence images
- Compatible with Windows 7, 8 and 10, both 32 and 64 bits configuration. A Mac OS version is also supplied (with a few differences in features)
- PC requirements: Intel Core2 2.8 GHz or higher or equivalent, 2GB memory or more, 17" screen

One language can be selected during initial installation of the ImageFocus Alpha software English, Catalan, French, German, Indonesian, Italian, Japanese, Korean, Polish, Russian, Simplified Chinese, Spanish, Thai, Traditional Chinese, Turkish



● AE.5130

NZ.9850 ●

## adapter guide

### microscope and camera

Most Euromex cameras are supplied with (a) standard plug & play adapter(s), which means that it can be connected to any Euromex microscope, except for the Oxion and Oxion Inverso series. These microscopes need an additional adapter. See next page. Do you want to connect one of our cameras to another microscope brand, see adapter references below:

MODELS	1/3 inch camera	1/2 inch camera	2/3 inch camera	1 inch camera
Leica <sup>(1)</sup>	AE.9835-L (0.35x)	AE.9855-L (0.55x)	AE.9870-L (0.70x)	AE.9810-L (1x) AE.9812-L (1.2x)
Olympus <sup>(2)</sup>	AE.9835-O (0.35x)	AE.9850-O (0.50x)	AE.9863-O (0.63x) AE.9880-O (0.80x)	AE.9810-O (1x) AE.9812-O (1.2x)
Zeiss <sup>(3)</sup>	AE.9835-Z (0.35x)	AE.9850-Z (0.50x)	AE.9865-Z (0.65x)	AE.9810-Z (1x) AE.9812-Z (1.2x)
Zeiss ZA <sup>(4)</sup>	--	AE.9850-ZA (0.50x)	AE.9863-ZA (0.63x) AE.9880-ZA (0.80x)	AE.9810-ZA (1x) AE.9812-ZA (1.2x)
Nikon <sup>(5)</sup>	AE.9835-N (0.35x)	AE.9855-N (0.55x)	AE.9870-N (0.70x) AE.9880-N (0.80x)	AE.9810-N (1x) AE.9812-N (1.2x)

<sup>(1)</sup> Leica DM, 35 mm to 25.4 mm C-mount, stainless steel  
<sup>(2)</sup> Olympus CX, CX2, BX, BX2, IX, MX, GX, SZX, STM, 35 mm to 25.4 mm C-mount, anodized aluminum  
<sup>(3)</sup> Zeiss PrimoStar, PrimoStar Vert, 30 mm to 25.4 mm C-mount, anodized aluminum  
<sup>(4)</sup> Zeiss 60N-C, 60N-T2 photo ports of Axio examiner, Axio Imager, Axio Lab, Axio Observer, Axio Scope, Axio Zoom, Stemy 508 and SteREO Discovery  
<sup>(5)</sup> Nikon E100, E200, 50i, 55i, 80i, 90i, Ni series, Ti Series, SMZ800, SMZ1000, SMZ15000, 38 mm to 25.4 mm C-mount, stainless steel

● AE.9835-L



### STANDARD PLUG & PLAY

C-mount adapters for standard Ø 23.2 mm tube

- DC.1359** C-mount adapter with 1x lens, fixed focal length and short barrel, for standard 23.2 mm tube and 1 inch camera
- DC.1327** C-mount adapter with 0.75x objective for 2/3" camera
- DC.1324** C-mount adapter with 0.45x objective for 1/2" camera
- DC.1353** C-mount adapter with 0.37x objective, fixed focal length and short barrel\*. For 1/3" camera
- DC.1355** C-mount adapter with 0.50x objective, fixed focal length and short barrel\*. For 1/2" camera
- DC.1357** C-mount adapter with 0.75x objective, fixed focal length and short barrel\*. For 2/3" camera
- DC.1330** 30 mm to 23.2 mm conversion adapters
- DC.1335** 30.5 mm to 23.2 mm conversion adapters

\*for increased light efficiency



● DC.1355



● DC.1330 / DC.1335



● DC.1324



● AE.5130



● AE.5120-2

### DIGITAL SLR ADAPTERS

Digital single lens reflex camera with a APS-C sensor can be mounted on a standard 23.2 mm trinocular tube  
Choose the universal DC.5130 adapter with built-in 2x objective, together with a brand-specific T-2 adapter

- AE.5130** Universal SLR camera adapter for 23.2 mm tube with built-in 2x magnification lens. Needs T2 adapter
- AE.5120-2** Standard 23.2 mm diameter tube for Oxion photo port (x)
- AE.5025** T2 adapter for Nikon D digital SLR cameras
- AE.5040** T2 adapter for Canon EOS digital SLR cameras

Other T2 adapters on request

### PHOTO PORT ADAPTERS

Suitable for Euromex microscopes with a photo port such as Oxion, NexusZoom and StereoBlue

- OX.9810** C-mount adapter with 1x magnification for 1" cameras
- OX.9833** C-mount adapter with 0.33x objective for Oxion microscopes and 1/3" cameras
- OX.9850** C-mount adapter with 0.5x objective for Oxion and Oxion Inverso microscopes and 1/2" cameras

- NZ.9833** C-mount adapter with 0.33x objective for NexusZoom microscopes and 1/3" cameras
- NZ.9850** C-mount adapter with 0.5x objective for NexusZoom microscopes and 1/2" cameras
- SB.9850** C-mount adapter with 0.5x objective for StereoBlue microscopes and 1/2" cameras