

life science

biological microscopes



biological microscopes

Euromex offers a wide range of life science microscopes that are used by researchers and biologists worldwide

On the next pages you will find details about our different models and we will get you introduced to new technologies in microscopy such as the iCare sensor, CSS system and new LED technology, which brings Euromex users to the next level of microscopy



ISCOPE • PAGE 108
BSCOPE • PAGE 118
DELPHI-X OBSERVER • PAGE 126
OXION • PAGE 136
BIOBLUE.LAB • PAGE 142
OXION INVERSO • PAGE 146
DELPHI-X INVERSO • PAGE 152

LIFE SCIENCE MICROSCOPES

iscope®

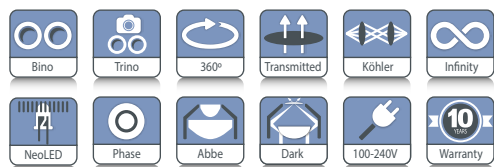
NeoLED™
euromex optical technology

FEATURED

iScope®

The iScope® is available in various configurations suitable for Life and Biomedical Sciences, high schools, universities but also for routine medical applications

Besides the brightfield contrast method, configurations for phase contrast, cardioid mirror darkfield, basic polarization and several epi-illumination sources for fluorescence applications can be used. iScope® models with multiheads are also available for teaching purposes



● IS.1153-PLi

IS.1152-PLi

407 (h) x 210 (w) x 255 mm (d) | 9.0 kg

HIGHLIGHTS

- EWF 10x/22 mm and EWF 10x/20 mm eyepieces
- Binocular and trinocular models
- Multihead and face-to-face dual head systems
- Optional tilting head
- Quintuple reversed nosepiece
- E-plan, plan and plan phase objectives
- E-plan, plan and plan phase IOS objectives
- 156 x 138 mm stage
- 187/230 x 140 mm rackless stage
- Cardioid mirror darkfield condenser with 5 W NeoLED™ illumination
- 3 W NeoLED™ Köhler illumination
- iCare sensor for energy saving
- CSS - Cable Storage System
- 10 Years warranty



● iScope® tilting head

SPECIFICATIONS

EYEPIECES

- Extended plan wide field EWF 10x/20 mm eyepieces with 20 mm field of view and adjustable diopter on the left eyepiece for non-infinity corrected systems (Ø 23.2 mm tube)
- Extended plan wide field EWF 10x/22 mm eyepieces with 22 mm field of view and adjustable diopter on both eyepieces for infinity corrected IOS plan and plan phase systems and adjustable diopter on the left tube for EPLi systems (Ø 30 mm tube)

HEAD

Binocular and trinocular Siedentopf type heads with 30° inclined tubes. Interpupillary distance from 48 to 76 mm. The trinocular head of the plan infinity corrected models (IS.1153-PLi) has an optical path selector (100:0 / 50:50) and ± 5 diopter adjustments on both Ø 30 mm tubes. The trinocular head of the E-plan infinity corrected models (IS.1153-EPLi) has a fixed built-in beam splitter (50:50) and ± 5 diopter adjustment on the Ø 30 mm left tube. The trinocular head of the E-plan finite models (IS.1153-EPL) has a fixed built-in 50:50 beam splitter and one ± 5 diopter adjustment on the Ø 23.2 mm left tube. A unique rotating

system allows the ergonomic positioning of both tubes in a high (431 mm) and in a low position (397 mm). The trinocular head comes with a Ø 23.2 mm photo port

ERGONOMIC TILTING HEAD

Optional ergonomic 5° to 35° tilting head supplied with EWF 10x/22 mm eyepieces, interpupillary distance 48-75 mm and optional photo attachment with standard Ø 23.2 mm tube (only infinity corrected models)

To order an iScope® with tilting head use reference IS.1158-xxx

To order an iScope® with tilting head and photo tube attachment use reference IS.1159-xxx

FACE-TO-FACE DUAL HEAD SYSTEM

The iScope® models now can also be equipped with a face-to-face trinocular head for two users allowing simultaneous observation. Supplied with 30° inclined tubes and plan or E-plan 4x, 10x, S40, S100x oil immersion infinity corrected IOS objectives. The central attachment is equipped with a joystick to move a green and red laser pointer across the entire field of views of the two heads. The trinocular head is supplied with extended wide field EWF 10x/22 mm eyepieces and the

second binocular head is supplied with extended wide field EWF 10x/20 mm eyepieces. (Order reference: IS.1154-PLi)

MULTIHEAD SYSTEM

The iScope® can be extended with a unique multihead system for in total two, three or five heads, allowing simultaneous observation of specimens

OBJECTIVES

E-plan EPL	4x/0.10	10x/0.25	20x/0.40*	S40x/0.65	S100x/1.25 oil
E-plan EPLi IOS	4x/0.10	10x/0.25		S40x/0.65	S100x/1.25 oil
Plan PLi IOS	4x/0.10	10x/0.25	20x/0.40*	S40x/0.65	S60x/0.85* S100x/1.25 oil
Plan phase PLPH		10x/0.25	20x/0.40	S40x/0.65	S100x/1.25 oil
Plan phase PLPHi IOS		10x/0.25	20x/0.40	S40x/0.65	S100x/1.25 oil

* optional
All optics are anti-fungus treated and anti-reflection coated for maximum light throughput

NOSEPIECE

Revolving quintuple reversed nosepiece for max. 5 objectives

STAGE

- The iScope® can be equipped with three types of stages:
- 156 x 138 mm stage equipped with integrated 79 x 52 mm X-Y mechanical stage
 - 187/230 x 140 mm rackless stage equipped with double slide holder and integrated 79 x 52 mm X-Y mechanical stage. The iScope® rackless stage has no protruding parts, enables more smooth movements and is safer
 - 220 x 157 mm ceramic stage with integrated 75 x 50 mm X-Y mechanical stage. The ceramic coating protects the stage effectively against marks and scratches. The surface also ensures stray light not to be reflected from the stage into the objective

The iScope® can be supplied with a heating stage which can be set up to 50° Celsius by a PID temperature controller. Only available with newly purchased microscopes. Higher temperatures can be achieved on special request

The central attachment is equipped with a joystick to move a green and red laser pointer across the entire field of view of all heads. Configurations with one, two or four additional viewing binocular heads, 30° inclined tubes and plan 4x, 10x, S40x, S100x oil immersion infinity corrected IOS objectives. All heads are equipped with extended wide field plan EWF 10x/22 mm eyepieces
(references: IS.1156-PLi-x, x = total number of heads)

CONDENSER FOR BRIGHTFIELD

The standard height adjustable Abbe N.A. 1.25 condenser for brightfield accepts sliders with phase annuli suitable for plan phase 10x/20x or S40x/S100x oil immersion IOS objectives for economical phase contrast. With magnification indication. A slider with a simple dark stop for darkfield up to 400x magnification is also available

CONDENSER FOR ZERNIKE PHASE CONTRAST

An optional height adjustable Zernike NA. 1.25 phase contrast disc condenser with plan phase 10/20/S40x and S100x oil immersion objectives and darkfield stop position for darkfield contrast up to 400x magnification. Supplied with alignment telescope and green filter

CONDENSER FOR DARKFIELD

A state-of-the-art condenser equipped with reflective cardioid mirrors, a high powered 5 W LED and a S100x objective with built-in iris diaphragm enable a real 1000x magnification darkfield solution. By using IS.9150 and 86.521 an existing brightfield microscope can be upgraded to darkfield

FOCUSING

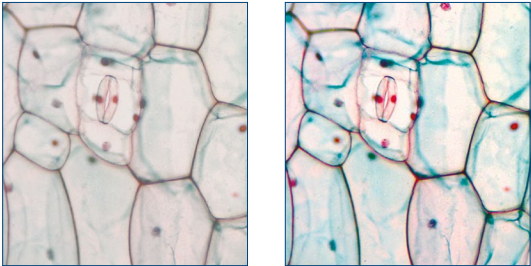
Coaxial coarse and fine adjustments, 200 graduations, 1 µm per graduation, 200 µm per rotation, total travel range is approximately 24 mm. Supplied with an adjustable rack stop to prevent damage to sample and objectives. The coarse adjustments are equipped with friction control

ILLUMINATION

3 W adjustable Köhler NeoLED™ diascope illumination with internal 100-240 V power supply. The innovative NeoLED™ design offers larger apertures, allowing the optical system of the iScope® microscope to produce images at higher resolutions, very close to the theoretical diffraction limit of the optics. Other benefits of the NeoLED™ is the low energy consumption, no heating and a long operating life span. The Köhler illumination on models with IOS plan and plan phase infinity corrected system provides high contrast and a maximum achievable resolving power of the optics. Also available for other models as option

ICARE SENSOR

The unique iCare Sensor is developed to avoid unnecessary loss of energy. The illumination of the microscope automatically switches off shortly after microscopists step away from their position



● Normal LED ● NeoLED™

CSS – CABLE STORAGE SYSTEM

iScope® allows users to easily insert the power cable into the back of the instrument, which enables easy storage. The integrated carrying grip at the back of the microscope ensures safe transportation of the microscope

PACKAGE CONTENT

Supplied with power cord, dust cover, a spare fuse, user manual and 5 ml immersion oil for models with S100x objective. Phase contrast models are supplied with green filter and alignment telescope. All packed in polystyrene boxes



Check out the product video on YouTube and learn more about this microscope. YouTube channel:
Euromex Optics Group B.V.



ISCOPE® FOR LIFE SCIENCE (NON-INFINITY MODELS)

MODELS	Binocular	Trinocular	Phase contrast	EWF 10x20 mm	E-plan objectives	Plan phase objectives	Mechanical stage	iCare Sensor
IS.1152-EPL	•			•	•		•	•
IS.1153-EPL		•		•	•		•	•
IS.1152-PLPH	•		•	•		•	•	•
IS.1153-PLPH		•	•	•		•	•	•

ISCOPE® FOR LIFE SCIENCE (INFINITY MODELS)

MODELS	Binocular	Trinocular	Phase contrast	EWF 10x22 mm	E-plan IOS objectives	Plan IOS objectives	Plan phase IOS objectives	Mechanical stage	iCare Sensor	Köhler LED
IS.1152-EPLi	•			•	•			•	•	
IS.1153-EPLi		•		•	•			•	•	
IS.1152-PLi	•			•*		•		•	•	•
IS.1153-PLi		•		•*		•		•	•	•
IS.1152-PLPHi	•		•	•*			•	•	•	•
IS.1153-PLPHi		•	•	•*			•	•	•	•

* Two tubes with diopter adjustments

ISCOPE® FOR LIFE SCIENCE (FACE-TO-FACE DUAL HEAD SYSTEM)

MODELS	Total users	Binocular EWF 10x/20 mm	Trinocular EWF 10x/20 mm	E-plan IOS 4x/10x/ 40x/100x objectives	Plan IOS 4x/10x/ 40x/100x objectives	Mechanical rackless stage	iCare sensor	Köhler LED
IS.1154-PLi	2	2x			•	•	•	•
IS.1154-EPLi	2	2x		•		•	•	•
IS.1154-PLi/T	2	1x	1x		•	•	•	•
IS.1154-EPLi/T	2	1x	1x	•		•	•	•

ISCOPE® FOR LIFE SCIENCE (INFINITY - MULTIHEAD SYSTEMS)

MODELS	Total users	Binocular	Trinocular	EWF 10x22 mm	Plan IOS objectives	Mechanical rackless stage	iCare sensor	Köhler LED
IS.1156-PLi2	2	1x	•	•	•	•	•	•
IS.1156-PLi3	3	2x	•	•	•	•	•	•
IS.1156-PLi5	5	4x	•	•	•	•	•	•
IS.1156-PLi9	9	8	•	•	•	•	•	•



● IS.1156-PLi-9

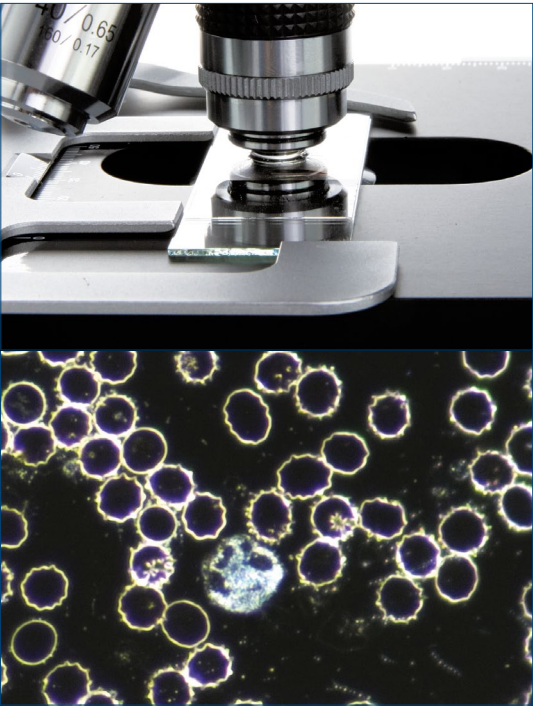
ISCOPE® FOR LIFE SCIENCE (INFINITY - ERGONOMIC TILTING HEAD)

MODELS	Binocular	Photo port	Phase contrast	EWF 10x22 mm	E-plan IOS objective	Plan IOS objectives	Plan phase IOS objectives	Mechanical rackless stage	iCare Sensor	Köhler LED
IS.1158-EPLi	•			•	•			•	•	
IS.1159-EPLi	•	•		•	•			•	•	
IS.1158-PLi	•			•		•		•	•	•
IS.1159-PLi	•	•		•		•		•	•	•
IS.1158-PLPHi	•		•	•			•	•	•	•
IS.1159-PLPHi	•	•	•	•			•	•	•	•

ISCOPE® FOR LIFE SCIENCE (DARKFIELD CONTRAST APPLICATION)

MODELS	Trinocular	Darkfield	EWF 10x20 mm	EWF 10x22 mm	E-plan objective	Plan IOS objectives	Mechanical rackless stage	iCare sensor	Köhler LED
IS.1153-PLi/DF	•	•		•		•	•	•	•
IS.1153-PLi/DFi	•	•		•		•	•	•	•
IS.1153-EPL/DF	•	•	•		•			•	

Models for darkfield observation IS.1152-PLi/DF and IS.1153-PLi/DF are supplied with a state-of-the-art condenser equipped with reflective cardioid mirrors and a high powered 5 W LED. Together with a S100x objective with built-in iris diaphragm real 1000x magnification darkfield solution can be achieved. All other specifications are identical to models IS.1152-PLi and IS.1153-PLi



DARKFIELD

Darkfield contrast is used in particular for unstained samples. The produced image has the appearance of a dark, almost black background with highlighted bright objects on it, producing very recognizable, often even called spectacular images. These objects, because they are unstained, are hard to see with brightfield contrast. The applications are mostly biological samples, smears from tissue culture or water-borne, single-celled organisms

In the past darkfield microscopy was limited due to low light levels. Euromex has overcome this issue by developing very strong illumination methods, without causing damage to the samples. A 5 W build in high power LED is used to power the especially designed cardioid-shaped lens condenser system. Combined with a special 100x objective with built-in iris diaphragm for extra contrast this system is unique in its class

ACCESSORIES AND SPARE PARTS

EYEPIECES (23.2 MM)

- IS.6010** EWF 10x/20 mm eyepiece (Ø 23.2 mm tube)
- IS.6010-P** EWF 10x/20 mm eyepiece with pointer (Ø 23.2 mm tube)
- IS.6010-C** EWF 10x/20 mm eyepiece with crosshairs (Ø 23.2 mm tube)
- IS.6010-CM** EWF 10x/20 mm eyepiece with 10/100 micrometer and cross (Ø 23.2 mm tube)
- IS.6015** WF 15x/16 mm eyepiece (Ø 23.2 mm tube)
- IS.6020** WF 20x/12 mm eyepiece (Ø 23.2 mm tube)
- IS.6099** Pair of eyecups, Ø 23.2 mm tube

EYEPIECES (30 MM)

- IS.6210** EWF 10x/22 mm eyepiece (Ø 30mm tube)
- IS.6210-C** EWF 10x/22 mm eyepiece with crosshairs (Ø 30 mm tube)
- IS.6210-P** EWF 10x/22 mm eyepiece with pointer (Ø 30 mm tube)
- IS.6210-CM** EWF 10x/22 mm eyepiece with 10/100 micrometer and crosshairs (Ø 30 mm tube)
- IS.6212** WF 12.5x/17 mm eyepiece (Ø 30 mm tube)
- IS.6212-W** WF 12.5x/17 mm eyepiece with Walton Beckett reticle (Ø 30 mm tube)
- IS.6215** WF 15x/16 mm eyepiece (Ø 30 mm tube)
- IS.6220** WF 20x/12 mm eyepiece (Ø 30 mm tube)
- IS.6299** Pair of eyecups infinity models (Ø 30 mm tube)

OBJECTIVES

- IS.7104** E-plan EPL 4x/0.10 objective. WD 15.2 mm
- IS.7110** E-plan EPL 10x/0.25 objective. WD 5.5 mm
- IS.7120** E-plan EPL 20x/0.40 objective. WD 3.5 mm
- IS.7140** E-plan EPL S40x/0.65 objective. WD 0.45 mm
- IS.7160** E-plan EPL S60x/0.85 objective. WD 0.19 mm
- IS.7100** E-plan EPL S100x/1.25 objective. WD 0.13 mm
- IS.7710** Plan PLPH 10x/0.25 phase contrast objective. WD 12.2 mm
- IS.7720** Plan PLPH 20x/0.40 phase contrast objective. WD 5 mm
- IS.7740** Plan PLPH S40x/0.65 phase contrast objective. WD 0.37 mm

- IS.7700** Plan PLPH S100x/1.25 phase contrast objective. WD 0.13 mm
- IS.8804** E-plan EPLi 4x/0.10 IOS infinity corrected objective. WD 15.4 mm
- IS.8810** E-plan EPLi 10x/0.25 IOS infinity corrected objective. WD 5.8 mm
- IS.8840** E-plan EPLi S40x/0.65 IOS infinity corrected objective. WD 0.43 mm
- IS.8800** E-plan EPLi S100x/1.25 IOS infinity corrected objective . WD 0.13 mm
- IS.7202** Plan PLi 2x/0.05 IOS infinity corrected objective, WD 18.3 mm. Best to be used together with swing-out condenser
- IS.7204** Plan PLi 4x/0.10 IOS infinity corrected objective. WD 15.4 mm
- IS.7210** Plan PLi 10x/0.25 IOS infinity corrected objective. WD 10 mm
- IS.7220** Plan PLi 20x/0.40 IOS infinity corrected objective. WD 5.1 mm
- IS.7240** Plan PLi S40x/0.65 IOS infinity corrected objective. WD 0.54 mm
- IS.7260** Plan PLi S60x/0.85 IOS infinity corrected objective. WD 0.14 mm
- IS.7200** Plan PLi S100x/1.25 IOS infinity corrected objective. WD 0.13 mm
- IS.7200-I** Plan Super Contrast PLi S100x/1.25 IOS infinity corrected objective with built-in iris diaphragm. WD 0.13 mm
- IS.7404** Plan Fluarex PLFi 4x/0.13 IOS infinity corrected objective. 0.17 mm cover glass correction. WD 16.3 mm
- IS.7410** Plan Fluarex PLFi 10x/0.30 IOS infinity corrected objective. 0.17 mm cover glass correction. WD 12.4 mm
- IS.7420** Plan Fluarex PLFi 20x/0.50 IOS infinity corrected objective. 0.17 mm cover glass correction. WD 1.5 mm

- IS.7440** Plan Fluarex PLFi S40x/0.75 IOS infinity corrected objective. 0.17 mm cover glass correction. WD 0.35 mm
- IS.7400** Plan Fluarex PLFi S100x/1,30 IOS infinity corrected objective. 0.17 mm cover glass correction. WD 0.13 mm
- IS.8910** Plan PLPHi 10x/0.25 phase contrast IOS infinity corrected objective. WD 10.2 mm
- IS.8920** Plan PLPHi 20x/0.40 phase contrast IOS infinity corrected objective. WD 5.1 mm
- IS.8940** Plan PLPHi S40x/0.65 phase contrast IOS infinity corrected objective. WD 0.5 mm
- IS.8900** Plan PLPHi S100x/1.25 phase contrast IOS infinity corrected objective. WD 0.13 mm

CONDENSERS

- IS.9102** Standard Abbe condenser 1.25 NA with slot for darkfield and phase contrast sliders
- IS.9105** Swing-out 0.9/1.25 N.A. condenser
- IS.9150** Cardiod darkfield condenser with integrated 5 W LED light source and external 100-240 V mains adapter
- 86.521** Plan PL S100x/1.25 oil immersion objective with built-in iris diaphragm. WD 0.33 mm

PHASE CONTRAST ATTACHMENTS

- IS.9124** Zernike phase contrast set including rotating disc with PLPH 10/20/40/100, brightfield and darkfield position
- IS.9127** Zernike phase contrast set including rotating disc with PLPH 10/20/40/100, brightfield and darkfield position
- IS.9148** Alignment telescope for phase contrast, Ø 30 mm tube
- IS.9149** Alignment telescope for phase contrast, Ø 23.2mm tube
- IS.9160** Phase contrast slider set with 10x and S40x PLPH objectives and annuli for 10/S40x PLPH objectives. Also suitable for optional 20x PLPH objective

- IS.9161** Phase contrast slider set with 20x and S100x PLPH objectives and annuli for 20x/S100x PLPH objectives
- IS.9162** Phase contrast slider set with 10x and S40x PLPHi IOS infinity corrected objectives and annuli for 10x/S40x PLPHi IOS infinity corrected objectives. Also suitable for optional 20x PLPHi infinity corrected objective
- IS.9163** Phase contrast slider set with 20x and S100x PLPHi IOS infinity corrected objectives and annuli for 20x/S100x PLPHi IOS infinity corrected objectives

MISCELLANEOUS

- IS.9170** Slider with darkfield stop
- IS.9194** Slider with phase contrast annuli for S40x phase contrast objective
- IS.9503** Large ceramic stage. Only with new microscopes, add /C suffix after iScope® model part number
- IS.9880** Köhler attachment
- IS.4300** Aluminum transport case for iScope®
- AE.3684** Glass fuses 500 mA 250 V, 10 pieces
- AE.5168-I** Heating stage series with controller, only with new microscopes
- SL.5500** NeoLED™ replacement unit

POLARIZATION ATTACHMENTS

- IS.9600** Polarization filter 45 mm for lamphouse
- IS.9601** Polarization set: simple rotating polarizer for lamphouse and fixed polarizer mounted under head
- IS.9626** Polarization filter for mounting under the head

FILTERS

- [IS.9700** Blue filter 45 mm for lamphouse
- IS.9702** Green filter 45 mm for lamphouse
- IS.9704** Yellow filter 45 mm for lamphouse
- IS.9706** White opaque filter 45 mm for lamphouse

CAMERA ACCESSORIES

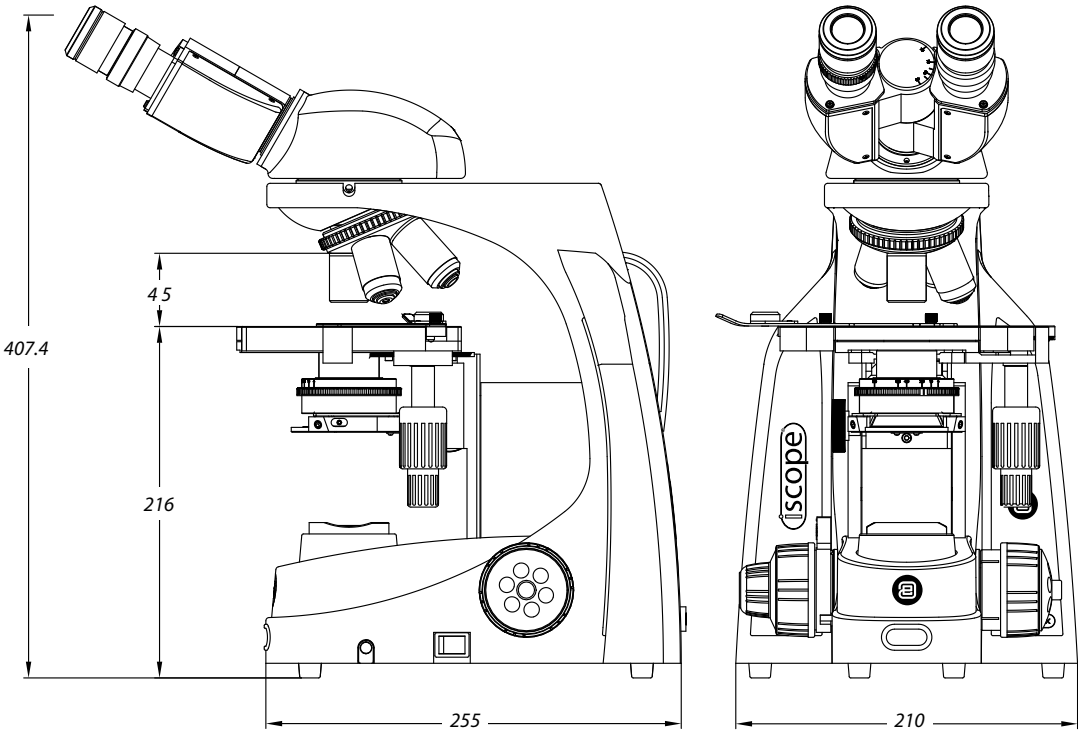
- IS.9800** Single photo tube attachment with one 23.2 mm tube for ergonomic tilting head of iScope® infinity systems
- AE.5130** Universal SLR adapter with built-in 2x lens for standard 23.2 mm tube. Needs T2 adapter
- AE.5025** T2 adapter for Nikon D SLR digital camera
- AE.5040** T2 adapter for Canon EOS SLR digital camera

DISPOSABLES

- PB.5155** Microscope slides 76 x 26 mm, ground edges, 50 pieces per pack
- PB.5157-W** Microscope slides 76 x 26 mm, ground edges and frosted side white color, 50 pieces per pack
- PB.5157-B** Microscope slides 76 x 26 mm, ground edges and frosted side blue color, 50 pieces per pack

- PB.5165** Cover glasses 18 x 18 mm, 0.13-0.17 mm, 100 pieces
- PB.5168** Cover glasses 22 x 22 mm, 0.13-0.17 mm, 100 pieces
- PB.5245** Lens cleaning paper, 100 sheets per pack
- PB.5255** Immersion oil, 25 ml. Refraction index $n = 1.482$
- PB.5274** Isopropyl alcohol 99%, 200 ml
- PB.5275** Cleaning kit: lens fluid, lint free lens tissue/paper, brush, air blower, cotton swabs
- PB.5276** Microscope maintenance and servicing kit, 16pcs: cleaning brush, 6 pcs screwdriver set, air blower, 3 pcs Allen key, 1.5, 2, 2.5 mm, lens cleaning fluid 20 ml, cleaning cloth 140 x 140 mm, 100 pcs lens tissue sheets, tube of maintenance grease, 10 ml bottle of oil, packed in a nice toolbox

WD = working distance





BIOLOGICAL MICROSCOPES

bscope®

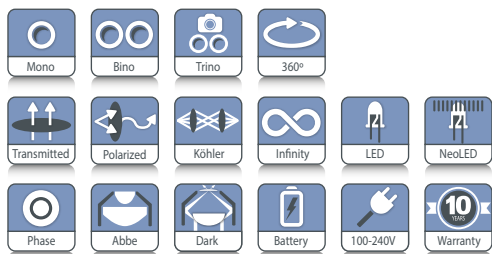
FEATURED

bScope®

versatile and evolutive!

The well-equipped microscopes of the bScope® series are intensively used in universities, small and mid-sized laboratories and in veterinary applications

The design of the bScope® is both ergonomic and evolutive. Height adjustable eye tubes and low stage controls minimize fatigue during long working sessions and thus provide more comfort for microscopists. The robust, compact size of the bScope® and the Cable Storage System allow more working space, safer operation and enable easy storage



BS.1153-EPLi

MONOCULAR: BS.1151-EPL / BS.1151-PL

385 (h) x 235 (w) x 195 (d) | 6.3 kg

BINOCULAR: BS.1152-EPL / BS.1152-EPLi / BS.1152-PLi

409 (h) x 195 (w) x 235 mm (d) | 6.5 kg

TRINOCULAR: BS.1153-EPL / BS.1153-EPLi / BS.1153-PLi

459 (h) x 195 (w) x 235 mm (d) | 6.6 kg



BS.1152-PLi

BS.1151-EPL

SPECIFICATIONS

EYEPIECE(S)

High wide field HWF 10x/20 mm secured eyepiece(s) with 20 mm field of view (Ø 23.2 mm tube). The eyepiece of monocular models is supplied with pointer

HEAD

The bScope® is available with a monocular head (45° inclined Ø 23.2 mm tube) or with binocular or trinocular heads equipped with a Siedentopf type head, 360° rotatable and equipped with 30° inclined Ø 23.2 mm tubes. Binocular and trinocular models have a diopter ± 5 adjustment on the left eyepiece. The interpupillary distance is adjustable between 48 to 76 mm. The models equipped with plan infinity corrected PLi objectives have a unique swiveling system of the eyepiece tubes for ergonomic positioning of the eyepieces in a high and in a low position. The trinocular head comes with a Ø 23.2 mm tube, ensuring maximum flexibility. The prisms inside the heads are designed to minimize the light absorption for perfect digital imaging. A unique rotating system allows the ergonomic positioning of both tubes in a high (431 mm) and in a low position (377 mm). Only for IOS models. Models with an integrated USB-2.0 camera are supplied with a 5.0 MP 1/2.5" CMOS sensor with a resolution of 2592 x 1944 pixels (see chapter 7)

HIGHLIGHTS

- Versatile and evolutive microscopes
- Monocular, binocular and trinocular models
- Digital models available
- HWF 10x/20 mm eyepieces
- Reversed ball-bearing quadruple or quintuple nosepiece with slot for polarization filter
- E-plan, plan, E-plan IOS and plan IOS objectives
- E-plan phase, E-plan phase IOS, plan phase IOS objectives
- Rackless integrated X-Y mechanical stage
- 3 W NeoLED™ adjustable illumination system
- Darkfield cardioid condenser with 5 W NeoLED™
- Integrated carrying grip
- Cable Storage System and anti-theft system
- 10 Years warranty

NOSEPIECE

Revolving and reversed ball-bearing quadruple or quintuple nosepiece

OBJECTIVES

The state-of-the-art production techniques and multi layer coatings used for the manufacturing of the bScope® objectives enable the bScope® to be used for the most demanding applications. World class spherical aberration correction and modern CNC and assembly technology ensure the perfect centering of the objectives

- Brightfield models: E-plan, plan, E-plan IOS infinity corrected, plan IOS infinity corrected 4x/0.10, 10x/0.25, 20x/0.40, S40x/0.65, S60x/0.85 and S100x/1.25 oil immersion objectives
- Phase contrast models: E-plan phase, E-plan phase IOS infinity corrected, plan phase IOS infinity corrected 10x/0.25, 20x/0.40, S40x/0.65 and S100x/1.25 oil immersion objectives

All S40x, S60x and S100x oil immersion objectives are spring loaded. All optics are anti-fungus treated and anti-reflection coated for maximum light throughput

FOCUSING

Double coaxial, low-positioned coarse and fine adjustments with 180 graduations. Precision 1.1 µm, 200 µm per rotation, total travel range is approximately 19 mm. Supplied with an adjustable rack stop to prevent damage to sample and objectives. The coarse adjustment is equipped with friction control

STAGE

The bScope® is equipped with a scratch resistant 152/197 x 131 mm stage with integrated 75 x 36 mm X-Y rackless mechanical stage, Vernier scale, soft-close removable specimen holder. The rackless stage has no protruding parts, enables more smooth movements and is safer in use. Low-positioned X-Y control knobs prevent fatigue during long working sessions. The bScope® can be equipped with a heating stage which can be set up to 50° Celsius by a PID temperature controller. Only available with newly purchased microscopes

CONDENSER FOR BRIGHTFIELD

The standard height adjustable Abbe N.A. 1.25 condenser for brightfield comes with an iris diaphragm and swing-out filter holder

CONDENSER FOR ZERNIKE PHASE CONTRAST

The height adjustable Zernike NA. 1.25 phase contrast disc condenser comes with phase annuli for 10/20/S40x and S100x phase contrast objectives, an iris diaphragm, a swing-out filter holder and also a BF position for brightfield contrast. Phase contrast objectives exist in either EPL-PH, EPL-PHi or PL-PHi phase contrast versions. Supplied with alignment telescope and green filter

CONDENSER FOR SIMPLE PHASE CONTRAST

The height adjustable NA. 1.25 simple phase contrast condenser has a free slot for either a slider for 10/S40x phase contrast objectives or a slider for 20/S100x phase contrast objectives. The condenser has an iris diaphragm and filter holder. The condenser includes a BF position for brightfield contrast with an iris diaphragm and filter holder. Phase contrast objectives exist in either EPL-PH, EPL-PHi or PL-PHi versions. Supplied with alignment telescope and green filter

POLARIZATION

The bScope® has an integrated slot above the nosepiece for an optional polarization filter

NEOLED™ ILLUMINATION

The 3 W adjustable Köhler NeoLED™ diascopic illumination is powered by an internal 100-240 V power supply making it suitable for worldwide use. The innovative NeoLED™ design offers larger apertures, allowing the optical system of the bScope® microscope to produce images at higher resolutions, very close to the theoretical diffraction limit of the optics. Other benefits of the NeoLED™ is the low energy consumption, no heating and a long operating life span



Swing-out
Abbe condenser
0.9/1.25 NA



Zernike phase
contrast condenser
with filter holder



Ergonomic carrying
grip for easy
transportation

KÖHLER ILLUMINATION

A Köhler illumination system ensures for all infinity corrected IOS models the highest possible contrast and the maximum achievable resolving power. It generates a uniform illumination of the sample and eliminates all interference from dust on lenses and side glare of the light source

The Köhler illumination is optional for non-IOS models

CORDLESS USE

The optional rechargeable batteries turn the bScope® into a cordless system

CSS – CABLE STORAGE SYSTEM

Allows users to easily stow away excess cable length into the back of the instrument during operation and to roll up the power cable for easy storage

CARRYING GRIP

The integrated carrying grip at the back of the microscope ensures safe transportation of the microscope

ANTI-THEFT SLOT

At the back of the microscope a Kensington Security Slot is placed, which can be used to secure the instrument from theft

PACKAGE CONTENT

Smart Styrofoam packaging ensures a low environmental footprint while maintaining maximum safety during transport. Supplied with power cord, dust cover, tools, a spare fuse, white filter, user manual and 5 ml immersion oil

Phase contrast models are supplied with green filter and alignment telescope. An optional aluminum case can be supplied



● BS.1152-PLi

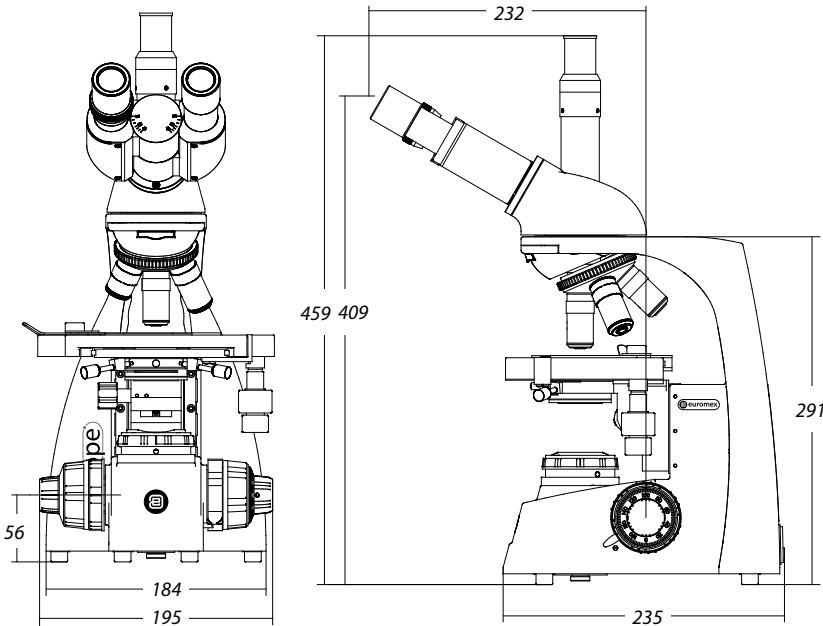
BSCOPE® FOR BRIGHTFIELD AND DARKFIELD *

MODELS	Mono	Bino	Trino	HWF 10x/20 mm eyepieces	Quadruple nosepiece plan 4/10/S40/S100x	Quadruple nosepiece E-plan 4/10/S40/S100x	Quintuple nosepiece E-plan IOS 4/10/S40/S100x	Quintuple nosepiece plan IOS 4/10/S40/S100x	Köhler NeoLED™	Neo- LED™	2-position swiveling ergo head
BS.1151-EPL
BS.1152-EPL
BS.1153-EPL
BS.1152-EPLi
BS.1153-EPLi
BS.1151-PL
BS.1152-PLi
BS.1153-PLi

BSCOPE® FOR PHASE CONTRAST *

MODELS	Bino	Trino	HWF 10x/20 mm eyepieces	Quadruple nosepiece E-plan phase 10/20/ S40/S100x	Quintuple nosepiece E-plan phase IOS 10/20/S40/S100x	Quintuple nosepiece plan phase IOS 10/20/S40/S100x	Köhler NeoLED™	NeoLED™	2-position swiveling ergo head
BS.1152-EPLPH
BS.1153-EPLPH
BS.1152-EPLPHi
BS.1153-EPLPHi
BS.1152-PLPHi
BS.1153-PLPHi

*All models can be supplied with three rechargeable AA batteries
All models are equipped with a 152/197 x 131 mm stage with integrated 75 x 36 mm X-Y rackless mechanical stage



ACCESSORIES AND SPARE PARTS

EYEPIECES

BS.6010	HWF 10x/20 mm eyepiece, Ø 23.2 mm tube	BS.8204	E-plan EPLi 4x/0.10 IOS infinity corrected objective. WD 18.9 mm
BS.6010-P	HWF 10x/20 mm with pointer, Ø 23.2 mm tube	BS.8210	E-plan EPLi 10x/0.25 IOS infinity corrected objective. WD 5.95 mm
BS.6010-C	HWF 10x/20 mm eyepiece with crosshairs, Ø 23.2 mm tube	BS.8220	E-plan EPLi 20x/0.40 IOS infinity corrected objective. WD 2.61 mm
BS.6010-CM	HWF 10x/20 mm eyepiece, Ø 23.2 mm tube with 10/100 micrometer and crosshairs	BS.8240	E-plan EPLi S40x/0.65 IOS infinity corrected objective. WD 0.78 mm
BS.6012	WF 12.5x/14 mm eyepiece, Ø 23.2 mm tube	BS.8200	E-plan EPLi S100x/1.25 IOS infinity corrected objective. WD 0.36 mm
BS.6015	WF 15x/11 mm eyepiece, Ø 23.2 mm tube		
BS.6020	WF 20x/11 mm eyepiece, Ø 23.2 mm tube		
BS.6099	Pair of eyecups		

OBJECTIVES

BS.7104	E-plan EPL 4x/0.10 objective. WD 37.0 mm	BS.8404	Plan PLi 4x/0.10 IOS infinity corrected objective. WD 21.0 mm
BS.7110	E-plan EPL 10x/0.25 objective. WD 6.61 mm	BS.8410	Plan PLi 10x/0.25 IOS infinity corrected objective. WD 5.0 mm
BS.7120	E-plan EPL 20x/0.40 objective. WD 1.85 mm	BS.8420	Plan PLi 20x/0.40 IOS infinity corrected objective. WD 8.8 mm
BS.7140	E-plan EPL S40x/0.65 objective. WD 0.64 mm	BS.8440	Plan PLi S40x/0.65 IOS infinity corrected objective. WD 0.66 mm
BS.7160	E-plan EPL S60x/0.85 objective. WD 0.20 mm	BS.8400	Plan PLi S100x/1.25 IOS infinity corrected objective. WD 0.36 mm
BS.7100	E-plan EPL S100x/1.25 objective. WD 0.19 mm		
BS.7204	Plan PL 4x/0.10 objective. WD 17.9 mm		
BS.7210	Plan PL 10x/0.25 objective. WD 8,8 mm		
BS.7220	Plan PL 20x/0.40 objective. WD 8,6 mm		
BS.7240	Plan PL S40x/0.65 objective. WD 0.56 mm	BS.8510	E-plan phase EPLPHi 10x/0.25 IOS infinity corrected objective. WD 5.95 mm
BS.7260	Plan PL S60x/0.85 objective. WD 0.25 mm	BS.8520	E-plan phase EPLPHi 20x/0.40 IOS infinity corrected objective. WD 2.61 mm
BS.7200	Plan PL S100x/1.25 oil immersion objective. WD 0.33 mm	BS.8540	E-plan phase EPLPHi S40x/0.65 IOS infinity corrected objective. WD 0.76 mm
BS.7510	E-plan phase EPLPH 10x/0.25 objective. WD 5.95 mm	BS.8500	E-plan phase EPLPHi S IOS infinity corrected objective. WD 0.36 mm
BS.7520	E-plan phase EPLPH 20x/0.40 objective. WD 2.61 mm		
BS.7540	E-plan phase EPLPH S40x/0.65 objective. WD 0.66 mm	BS.8710	Plan phase PLPHi 10x/0.25 IOS infinity corrected objective. WD 5.00 mm
BS.7500	E-plan phase EPLPH S100x/1.25 objective. WD 0.36 mm	BS.8720	Plan phase PLPHi 20x/0.40 IOS infinity corrected objective. WD 8.80 mm
		BS.8740	Plan phase PLPHi S40x/0.65 IOS infinity corrected objective. WD 0.66 mm
		BS.8700	Plan phase PLPHi S100x/1.25 IOS infinity corrected objective. WD 0.36 mm

WD = working distance

CONDENSERS

- BS.9102** Abbe condenser 1,25 NA with slot for darkfield and phase contrast sliders
- BS.9170** Darkfield stop for BS.9102 condenser
- BS.9105** Swing-out Abbe condenser 0.9/1.25 NA

PHASE CONTRAST ATTACHMENTS

- BS.9118** Zernike phase contrast kit with E-plan EPLPH 10/20/S40 and S100x oil phase contrast objectives, Zernike rotating condenser, telescope and green filter
- BS.9120** Zernike phase contrast kit with E-plan EPLPHi 10/20/S40 and S100x oil phase contrast IOS infinity corrected objectives, Zernike rotating condenser, telescope and green filter
- BS.9123** Zernike phase contrast kit with plan PLPH 10/20/S40 and S100x oil phase contrast objectives, Zernike rotating condenser, telescope and green filter
- BS.9126** Zernike phase contrast kit with plan PLPHi 10/20/S40 and S100x oil phase contrast IOS infinity corrected objectives, Zernike rotating condenser, telescope and green filter
- BS.9148** Alignment telescope for bScope® IOS version with Ø 30 mm tubes
- BS.9149** Alignment telescope for bScope® non IOS version with Ø 23.2 mm tubes
- BS.9156** Phase contrast kit with Abbe condenser with slot for slider. E-plan EPLPH 10/S40x phase contrast objectives, slider with 10 and 40x annuli, telescope and green filter
- BS.9157** Phase contrast kit with Abbe condenser with slot for slider. E-plan EPLPH 20/S100x phase contrast objectives, slider with 20 and 100x annuli, telescope and green filter
- BS.9158** Phase contrast kit with Abbe condenser with slot for slider. E-plan EPLPH i 10/S40x phase contrast infinity corrected objectives, slider with 10 and

- 40x annuli, telescope and green filter
- BS.9159** Phase contrast kit with Abbe condenser with slot for slider. E-plan EPLPHi 20/S100x phase contrast infinity corrected objectives, slider with 20 and 100x annuli, telescope and green filter
- BS.9162** Phase contrast kit with Abbe condenser with slot for slider. Plan PLPH i 10/S40x phase contrast infinity corrected objectives, slider with 10 and 40x annuli, telescope and green filter
- BS.9163** Phase contrast kit with Abbe condenser with slot for slider. Plan PLPHi 20/S100x phase contrast infinity corrected objectives, slider with 20 and 100x annuli, telescope and green filter

POLARIZATION ATTACHMENTS

- BS.9660** Polarization kit: analyzer under head and polarizer on lamphouse
- BS.9647** Polarization polarizer Ø 16 mm for slider under bScope® head
- BS.9651** Polarization attachment for lamphouse of bScope® with 360° scale

MISCELLANEOUS

- BS.9880** Köhler attachment
- BS.9900** Aluminum transport case
- BS.9993** NeoLED™ replacement unit
- AE.1370** Set of rechargeable batteries, three pieces

CAMERA ACCESSORIES

- AE.5130** Universal Ø 23.2 mm tube adapter with built-in 2x lens for SLR photo camera with APS-C sensor. Needs T2 adapter
- AE.5025** T2 adapter for Nikon D SLR digital camera
- AE.5040** T2 adapter for Canon EOS SLR digital camera

DISPOSABLES

- PB.5155** Microscope slides 76 x 26 mm, ground edges, 50 pieces per pack
- PB.5157-W** Microscope slides 76 x 26 mm, ground edges and frosted side white color, 50 pieces per pack
- PB.5157-B** Microscope slides 76 x 26 mm, ground edges and frosted side blue color, 50 pieces per pack
- PB.5165** Cover glasses 18 x 18 mm, thickness 0.13-0.17 mm, 100 pieces
- PB.5168** Cover glasses 22 x 22 mm, thickness 0.13-0.17 mm, 100 pieces
- PB.5245** Lens cleaning paper, 100 sheets per pack
- PB.5255** Immersion oil (25 ml). $n = 1.482$
- PB.5274** Isopropyl alcohol 99% (200 ml)
- PB.5275** Cleaning kit: lens cleaning fluid, lint free lens tissue/paper, brush, air blower, cotton swabs
- PB.5276** Microscope maintenance and servicing kit, 16pcs: cleaning brush, 6 pcs screwdriver set, air blower, 3 pcs Allen key, 1.5, 2, 2.5 mm, lens cleaning fluid 20 ml, cleaning cloth 140 x 140 mm, 100 pcs lens tissue sheets, tube of maintenance grease, 10 ml bottle of oil, packed in a nice toolbox



● BS.1153-PLPHi

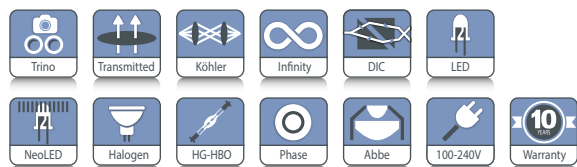
BIOLOGICAL MICROSCOPES

Delphi-X
observer

FEATURED

Delphi-X Observer

State-of-the-art microscopes for advanced life science applications. The outstanding optical performance of the Delphi-X Observer™ with 25 mm field of view and high numerical aperture of the plan 60 mm parfocal EIS objectives enable perfect observations, color rendering and high resolving power. This is the perfect microscope for anatomo-pathologists



● DX.2153-APLi

DX.1153-PLi

454 (h) x 260 (w) x 367 mm (d) | 18 kg

DX.2153-PLi

454 (h) x 260 (w) x 480 mm (d) | 18.5 kg

HIGHLIGHTS

- Trinocular model
- Sextuple reversed nosepiece with slot for DIC
- Super wide field SWF 10x/25mm eyepieces, Ø 30 mm tubes
- Enhanced infinity corrected EIS optical system
- Ergonomic tilting head
- 60 mm parfocal plan EIS objectives
- 60 mm parfocal plan semi-apochromatic EIS objectives
- M25 objective thread mounting
- 3 W NeoLED™ illumination
- 100 W halogen illumination
- Face-to-face dual head system
- Multihead systems
- Brightfield, darkfield, phase contrast
- Differential Interference Contrast (DIC)

SPECIFICATIONS

EYEPIECES

- Super wide field SWF 10x/25 mm, Ø 30 mm tubes
- Extended wide field EWF 10x/22 mm, Ø 30 mm tubes

STANDARD HEAD

Siedentopf trinocular head with 30° inclined tubes. Interpupillary distance adjustable between 47 and 78 mm. The trinocular standard head has an optical path selector (100:0 / 80:20 / 0:100). Diopter ± 5 adjustments on both eyepieces

ERGONOMIC TILTING HEAD

Optional ergonomic 0° to 35° tilting trinocular head supplied with SWF 10x/25 mm eyepieces, interpupillary distance between 47-78 mm and photo tube, standard with a Ø 23.2 mm tube. The trinocular tilting head has an optical path selector (100:0 / 80:20 / 0:100). Diopter ± 5 adjustments on both eyepieces



DX.1158-PLi ●

FACE-TO-FACE DUAL HEAD SYSTEM

The Delphi-X Observer™ can be supplied with two binocular heads in a face-to-face configuration, allowing simultaneous observation by two operators. The main binocular head is equipped with super wide field SWF 10x/25 mm eyepieces and the second head with EWF 10x/22 mm eyepieces. A joystick enables the operator to move a green or red laser pointer across the entire field of view of both heads

MULTIHEAD SYSTEM

The Delphi-X-Observer™ can be extended with a multihead system for two, three, five or ten users. The central attachment is equipped with a joystick to move a green and red laser pointer across the entire field of view of all heads. The multihead systems with two, three or five heads and 30° inclined tubes are supplied with super wide field SWF 10x/25 mm eyepieces. The multihead systems with ten heads and 30° inclined tubes have the trinocular main head equipped with super wide field SWF 10x/25 mm eyepieces and the other nine binocular heads with extended wide field EWF 10x/22 mm eyepieces. The Delphi-X Observer™ multihead system with ten heads is supplied without the iCare sensor



● DX.2156-PLi/10

NOSEPIECE

Revolving sextuple reversed nosepiece on ball-bearings with M25 objectives mounting threads

MOTORIZED MODEL

The Delphi-X Observer™ can be supplied with a motorized revolving sextuple reversed nosepiece together with a flip-down condenser. A precise step-motor allows the user to switch from objective by a simple push on a button. Another button allows quick switching between two preselected objectives. The electronics memorize automatically the light intensity levels for each objective after switching. The electronics also automatically flip out the front lens of the flip-down condenser when the 4x objective is used



● Motorized nosepiece

OBJECTIVES

Plan (PLi)	2x/0.06*	4x/0.10	10x/0.25	20x/0.40	S40x/0.65	S50x/ 0.95 oil*	S60x/ 0.80*	S100x/1.25 oil	S100x/ 1.25 oil iris*
Plan phase (PLPHi)			10x/0.25	20x/0.40	S40x/0.65			S100x/1.25 oil	
Plan semi-apo (PLi Apo)		4x/0.13	10x/0.30	20x/0.50	S40x/0.75			S100x/1.30 oil	

All objectives are 60 mm parfocal and have a M25 mounting thread, all optics are anti-fungus treated and anti-reflection coated for maximum light throughput and all S40x, S50x, S60x and S100x objectives are spring loaded
*Optional

ENHANCED INFINITY SYSTEM (EIS)

The enhanced infinity system (EIS) of the Delphi-X Observer™ consists of super wide field SWF 10x25 mm eyepieces, high numerical aperture, 60 mm parfocal objectives and a 200 mm focal length tube lens. This focal length tube lens reduces the angle of the light rays passing the optics and as a direct result it improves significantly the chromatic aberration corrections and contrast. The objectives with larger diameter enable much higher numerical apertures improving the overall resolving power of the optical system. For all these reasons the Delphi-X Observer™ offers superior optical performance for the most demanding applications

PLAN ACHROMATIC EIS OBJECTIVES (CLINICAL ROUTINE APPLICATIONS)

The Delphi-X Observer™ comes with plan achromatic 4x/0.10, 10x/0.25, 20x/0.40, S40x/0.65 and S100x/1.25 oil immersion infinity corrected EIS objectives

As an option available: 2x/0.06 , S50x/0.95 (oil immersion) and S60x/0.80

PLAN SEMI-APPOCHROMATIC OBJECTIVES (ANATOMO- AND HISTOPATHOLOGY APPLICATIONS)

The Delphi-X Observer™ can also be supplied with plan semi-apochromatic Fluarex 4x/0.13, 10x/0.30, 20x/0.50, S40x/0.75 and S100x/1.30 (oil immersion) infinity corrected EIS objectives

PLAN PHASE CONTRAST OBJECTIVES

The Delphi-X Observer™ with phase contrast is supplied with Plan phase EIS 10x/0.25, 20x/0.40, s40x/0.65 and s100x/1.25 (oil immersion) infinity corrected EIS objectives

STAGE

The 190 x 152 mm stage has a 78 x 32 mm integrated right-handed mechanical stage. Comes with scratch-resistant Gorilla glass. Sapphire scratch-resistant glass is available on request. Left-handed mechanical stage is also available on request



● Sextuple nosepiece

FOCUSING

Coaxial coarse and fine adjustment, 100 graduations, 1 µm precision, 100 µm per rotation, total travel range is approx. 35 mm. Supplied with an adjustable rack stop to prevent damage to sample and objectives. The coarse adjustments are equipped with friction control. The focusing knobs can be switched from left to right according to the user's preference

CONDENSER FOR BRIGHTFIELD

In height adjustable N.A. 0.90/1.25 Abbe swing-out condenser with numerical aperture identification marks. Models with a motorized nosepiece are supplied with a motorized condenser that automatically flips out the front lens of the condenser when the 4x objective is used

CONDENSER FOR PHASE CONTRAST

In height adjustable N.A. 1.25 Zernike phase contrast condenser with phase annuli for 10/20/40x and S100x-oil objectives. To be used with the phase contrast objectives

DIFFERENTIAL INTERFERENCE CONTRAST (DIC)

The Normarski differential interference contrast technique helps to enhance contrast of samples and lets samples appear as three-dimensional objects. The equipment consist of a specific rotating DIC condenser, two Normarski modified Wollaston prisms, a DIC slider for insertion into the slot of the sextuple reversed nosepiece and a polarizer

DIASCOPIIC ILLUMINATION

Two Köhler illuminations are available for the Delphi-X Observer™ microscope:

- Diascopic intensity adjustable 3 W NeoLED™ Köhler illumination with internal 100-240 V power supply
- Diascopic intensity adjustable 100 W halogen Köhler illumination with internal 100-240 V power supply

The diascopic halogen illumination comes with two push-in/push-out neutral density filters for smooth attenuation of the light intensity for all kinds of samples. The diascopic NeoLED™ illumination comes with one neutral density filter

LIGHT INTENSITY MEMORY FUNCTION

LIM automatically saves preferred brightness while changing magnifications. It eliminates the need for adjusting lamp brightness when changing magnification. This allows maintaining preferred brightness at each magnification, thus improving user efficiency significantly and reducing eye strain. Standard on all models with a motorized nosepiece, for other models see ordering instructions below

For ordering Automatic light intensity memory function

Example: DX.1153-PLi = DX.1153-PLi/LIM model but with automatic light control

NEOLED™

The innovative NeoLED™ design is a combination of a custom LED and a specially designed thin lens with a short focal length in order to obtain three main benefits:

- More oblique light from the LED light source can be captured, which increases the light output significantly
- Less energy is required to achieve this level of light intensity



Nosepiece lowering attachment (DX.9887)



Eye-level riser (DX.9885)

- The larger aperture of NeoLED™ allows the optical system to produce images at higher resolutions, very close to the theoretical diffraction limit of the optics

ICARE SENSOR

The unique iCare Sensor is developed to avoid unnecessary loss of energy. The illumination of the microscope automatically switches off shortly after the microscopist steps away from the microscope

CARRYING GRIP

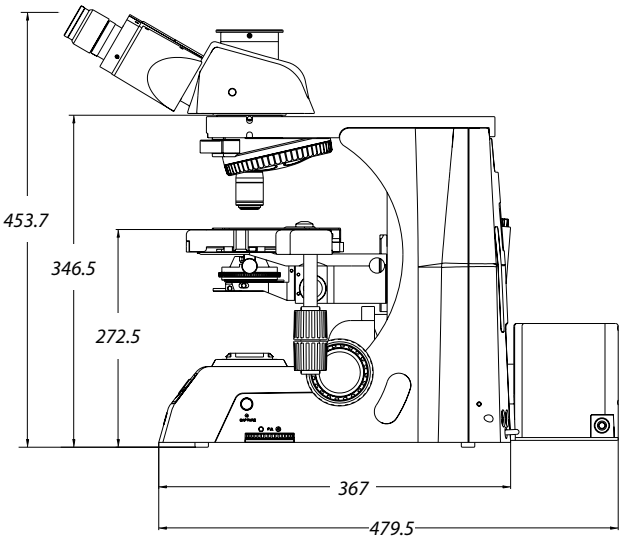
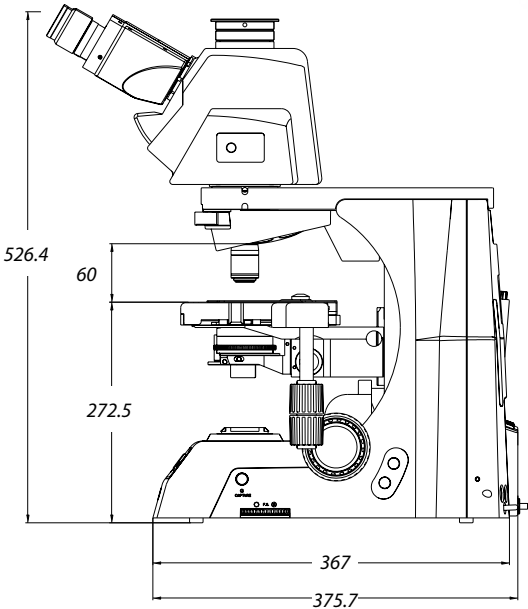
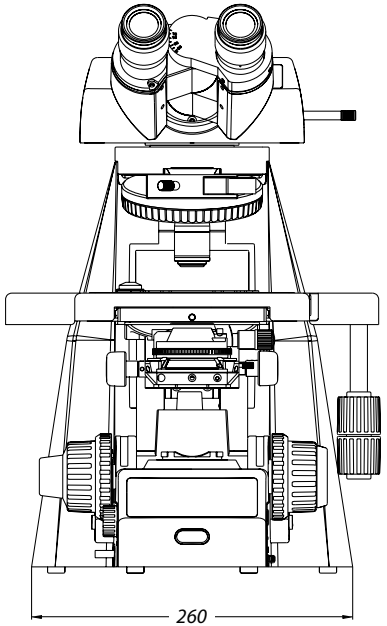
The carrying grip at the back of the microscope ensures safe transportation of the microscope and the integrated tool & holder makes sure the right tool is always available

PACKAGE CONTENT

Supplied with power cord, dust cover, a spare fuse, user manual and 5 ml immersion oil. All packed in a polystyrene box



iCare sensor



The motorized Delphi-X Observer™

STANDARD MODELS

MODELS	Ergonomic tilting head	SWF 10x/25 mm eyepieces	Sextuple nosepiece	Plan 4/10/20/ S40/ S100x oil EIS objectives	Plan semi-apo 4/10/20/S40/S100x oil EIS objectives	Plan phase 10/20/ S40/ S100x oil EIS objectives	3 W NeoLED™ Köhler	100 W 24 V halogen Köhler
DX.1153-PLi		•	•	•			•	
DX.1158-PLi	•	•	•			•		
DX.1153-APLi		•	•		•		•	
DX.1158-APLi	•	•		•		•		
DX.1153-PLPHi		•	•			•	•	
DX.1158-PLPHi	•	•			•	•		
DX.2153-PLi		•	•	•				•
DX.2158-PLi	•	•	•				•	
DX.2153-APLi		•	•		•			•
DX.2158-APLi	•	•		•			•	
DX.2153-PLPHi		•	•			•		•
DX.2158-PLPHi	•	•			•		•	



MOTORIZED MODELS

MODELS	Ergonomic tilting head	SWF 10x/25 mm eyepieces	Sextuple nosepiece	Plan 4/10/20/ S40/ S100x oil EIS objectives	Plan semi-apo 4/10/20/ S40/S100x oil EIS objectives	3 W NeoLED™ Köhler	100 W 24 V halogen Köhler
DX.1173-PLi		•	•	•		•	
DX.1178-PLi	•	•	•	•		•	
DX.1173-APLi		•	•		•	•	
DX.1178-APLi	•	•	•		•	•	
DX.2173-PLi		•	•	•			•
DX.2178-PLi	•	•	•	•			•
DX.2173-APLi		•	•		•		•
DX.2178-APLi	•	•	•		•		•

For ordering more motorized models, substitute the third digit "5" of the model reference with the digit "7"
Example: DX.1173-PLi = DX.1153-PLi model but with motorized nosepiece, flip-down condenser and automatic light control

FACE-TO-FACE DUAL HEAD SYSTEMS

MODELS	Total users	Trinocular head SWF 10x/25 mm eyepieces	Binocular head SWF 10x/22 mm eyepieces	Sextuple nosepiece	Plan 4/10/20/ S40/ S100x oil EIS objectives	Plan semi-apo Fluarex 4/10/20/ S40/S100x oil EIS objectives	Plan phase 10/20/S40/ S100x oil EIS objectives	3 W NeoLED™ Köhler	100 W 24 V halogen Köhler
DX.1154-PLi	2	1x	1x	•	•			•	
DX.1154-APLi	2	1x	1x	•		•		•	
DX.1154-PLPHi	2	1x	1x	•			•	•	
DX.2154-PLi	2	1x	1x	•	•				•
DX.2154-APLi	2	1x	1x	•		•			•
DX.2154-PLPHi	2	1x	1x	•			•		•

MULTIHEAD SYSTEMS

MODELS	Total users	Trinocular head SWF 10x/25 mm eyepieces	Number of binocular heads	Binocular head SWF 10x/25 mm eyepieces	Sextuple nose- piece	Plan 4/10/20/ S40/ S100x oil EIS objectives	Plan semi- apo Fluarex 4/10/20/S40/ S100x oil EIS objectives	Plan phase 10/20/S40/ S100x oil EIS objectives	3 W NeoLED™ Köhler	100 W 24 V halogen Köhler
DX.1156-PLi/2	2	1x	1	•	•	•			•	
DX.1156-PLi/3	3	1x	2	•	•	•			•	
DX.1156-PLi/5	5	1x	4	•	•	•			•	
DX.1156-APLi/2	2	1x	1	•	•		•		•	
DX.1156-APLi/3	3	1x	2	•	•		•		•	
DX.1156-APLi/5	5	1x	4	•	•		•		•	
DX.1156-PLPHi/2	2	1x	1	•	•			•	•	
DX.1156-PLPHi/3	3	1x	2	•	•			•	•	
DX.1156-PLPHi/5	5	1x	4	•	•			•	•	
DX.2156-PLi/2	2	1x	1	•	•	•				•
DX.2156-PLi/3	3	1x	2	•	•	•				•
DX.2156-PLi/5	5	1x	4	•	•	•				•
DX.2156-APLi/2	2	1x	1	•	•		•			•
DX.2156-APLi/3	3	1x	2	•	•		•			•
DX.2156-APLi/5	5	1x	4	•	•		•			•
DX.2156-PLPHi/2	2	1x	1	•	•			•		•
DX.2156-PLPHi/3	3	1x	2	•	•			•		•
DX.2156-PLPHi/5	5	1x	4	•	•			•		•
DX.2156-PLi/10	10	1x	9 ⁽¹⁾		•	•				•
DX.2156-APLi/10	10	1x	9 ⁽¹⁾		•		•			•
DX.2156-PLPHi/10	10	1x	9 ⁽¹⁾		•			•		•
DX.1156-PLi/10	10	1x	9 ⁽¹⁾		•	•			• ⁽²⁾	
DX.1156-APLi/10	10	1x	9 ⁽¹⁾		•		•		• ⁽²⁾	
DX.1156-PLPHi/10	10	1x	9 ⁽¹⁾		•			•	• ⁽²⁾	

⁽¹⁾ The model with 9 binocular heads (10 users) is supplied with EWF 10x/22 mm eyepieces

⁽²⁾ Supplied with 10 W NeoLED™ Köhler, without iCare sensor

ACCESSORIES AND SPARE PARTS

EYEPIECES

- DX.6010** Super wide field SWF 10x/25 mm eyepiece
- DX.6010-CM** Super wide field SWF 10x/25 mm eyepiece with micrometer and crosshairs
- DX.6210** Super wide field SWF 10x/22 mm eyepiece
- DX.6210-CM** Super wide field SWF 10x/22 mm eyepiece with micrometer and crosshairs
- DX.6012** Wide field WF 12.5x/17.5 mm eyepiece
- DX.6015** Wide field WF 15x/16 mm eyepiece
- DX.6020** Wide field WF 20x/12 mm eyepiece
- DX.6099-L** Eyecups for eyepiece

OBJECTIVES

- DX.7201** Infinity EIS 60 mm Plan PLi 1x/0.04 objective. WD 3.2 mm
- DX.7202** Infinity EIS 60 mm Plan PLi 2x/0.06 objective. WD 7.5 mm
- DX.7204** Infinity EIS 60 mm Plan PLi 4x/0.10 objective. WD 30 mm
- DX.7210** Infinity EIS 60 mm Plan PLi 10x/0.25 objective. WD 10.2 mm
- DX.7220** Infinity EIS 60 mm Plan PLi 20x/0.40 objective. WD 12 mm
- DX.7240** Infinity EIS 60 mm Plan PLi S40x/0.65 objective. WD 0.7 mm
- DX.7250** Infinity EIS 60 mm Plan PLi S50x/0.95 oil objective. WD 0.19 mm
- DX.7260** Infinity EIS 60 mm Plan PLi S60x/0.80 objectives. WD 0.3 mm
- DX.7200** Infinity EIS 60 mm Plan PLi S100x/1.25 oil immersion objective. WD 0.2 mm
- DX.7200-I** Infinity EIS 60 mm Plan PLi S100x/1.25 oil immersion objective with built-in iris diaphragm. WD 0.2 mm
- DX.7304** Infinity EIS 60 mm plan semi-apochromatic PLi-apo Fluarex 4x/0.13 objective. WD 16.5 mm
- DX.7310** Infinity EIS 60 mm plan semi-apochromatic PLi-apo Fluarex 10x/0.30 objective. WD 8.1 mm
- DX.7320** Infinity EIS 60 mm plan semi-apochromatic PLi-apo Fluarex 20x/0.50 objective. WD 2.1 mm

- DX.7340** Infinity EIS 60 mm plan semi-apochromatic PLi-apo Fluarex S40x/0.75 objective. WD 0.7 mm
- DX.7300** Infinity EIS 60 mm plan semi-apochromatic PLi-apo Fluarex S100x/1.30 oil immersion objective. WD 0.15 mm
- DX.7710** Infinity plan phase PLPHi 10x/0.25 objective
- DX.7720** Infinity plan phase PLPHi 20x/0.40 objective
- DX.7740** Infinity plan phase PLPHi S40x/0.65 objective
- DX.7700** Infinity plan phase PLPHi S100x/1.25 oil objective

STAGES

- DX.9501-R** Stage with Gorilla glass. Right handed
- DX.9501-L** Stage with Gorilla glass. Left handed
- DX.9504-R** Stage with Sapphire glass. Right handed
- DX.9504-L** Stage with Sapphire glass. Left handed
- DX.9501-LG** Option for left handed stage with Gorilla glass*
- DX.9504-RS** Option for right handed stage with Sapphire glass*
- DX.9504-LS** Option for left handed stage with Sapphire glass*

** Only with new Delphi-X Observer™ microscopes (resp. DX.xx5x-xxx/LG, DX.xx5x-xxx/RS and DX.xx5x-xxx/LS)*

PHASE CONTRAST EQUIPMENT

- DX.9126** Phase contrast set with 10/20/S40 and S100x oil objectives, supplied with rotating disc phase contrast condenser with phase annuli and alignment telescope
- DX.9140** Rotating disc phase contrast condenser with phase annuli without objectives
- DX.9148** Alignment telescope for phase contrast, Ø 30 mm tube

CONDENSERS

- DX.9105** Abbe condenser with 0.9/1.25 swing-out front lens
- DX.9110** Dry darkfield condenser
- DX.9112** Oil immersion darkfield condenser

POLARIZER

- DX.9660** Simple polarization kit
- DX.9662** Special polarization kit for gout

DIFFERENTIAL INTERFERENCE CONTRAST

- DX.9690** Rotating DIC and BF disc condenser without DIC prisms for life science Delphi Observer models. Needs one or more DIC-prisms (DX.9660-xx), slider with prism for nosepiece (DX.9693 and/or DX.9694) and DIC polarizer for transmitted light (DX.9695)
 - DX.9690-10** DIC prism for rotating disc condenser (DX.9690) for life science Delphi Observer models. To be used with plan semi-apo 10x objective
 - DX.9690-20** DIC prism for rotating disc condenser (DX.9690) for life science Delphi Observer models. To be used with plan semi-apo 20x objective
 - DX.9690-40** DIC prism for rotating disc condenser (DX.9690) for life science Delphi Observer models. To be used with plan semi-apo 40x objective
 - DX.9690-100** DIC prism for rotating disc condenser (DX.9690) for life science Delphi Observer models. To be used with plan semi-apo 100x objective
 - DX.9693** Slider with DIC prism for nosepiece and to be used with plan semi-apo 10x and 20x objectives of life science Delphi Observer models
 - DX.9694** Slider with DIC prism for nosepiece and to be used with plan semi-apo 40x and 100x objectives of life science Delphi Observer models
 - DX.9695** DIC polarization filter for transmitted light
- CAMERA ACCESSORIES**
- DX.9810** C-mount with 1x magnification for C-mount camera
 - DX.9835** C-mount with high resolution relay 0.35x objective for 1/3 inch C-mount camera
 - DX.9850** C-mount with high resolution relay 0.50x objective for 1/2 inch C-mount camera
 - DX.9863** C-mount with high resolution relay 0.63x objective for 2/3 inch C-mount camera

- AE.5130** Universal SLR adapter with built-in 2x lens for standard 23.2 mm tube. Needs T2 adapter
- AE.5025** T2 adapter for Nikon D SLR digital camera
- AE.5040** T2 adapter for Canon EOS SLR digital camera

MISCELLANEOUS

- DX.9704** Yellow filter for lamphouse, diameter 45 mm
- DX.9885** 25.4 mm eye-level riser (1 inch)
- DX.9887** 40 mm nosepiece and stage lowering attachment
- DX.9960** 100 Watt 24 V halogen bulb (revision 1 models)
- DX.9961** 100 Watt 12 V halogen bulb (revision-2 models)
- DX.9993** 3 Watt LED replacement
- AE.5214** 500 mA 250 V fuses for LED models, 10 pieces
- AE.5216** 5 A 250 V fuses for Halogen models, 10 pieces

DISPOSABLES

- PB.5155** Microscope slides 76 x 26 mm, ground edges, 50 pieces per pack
- PB.5157-W** Microscope slides 76 x 26 mm, ground edges and frosted side white color, 50 pieces per pack
- PB.5157-B** Microscope slides 76 x 26 mm, ground edges and frosted side blue color, 50 pieces per pack
- PB.5165** Cover glasses 18 x 18 mm, 0.13-0.17 mm, 100 pieces
- PB.5168** Cover glasses 22 x 22 mm, 0.13-0.17 mm, 100 pieces
- PB.5245** Lens cleaning paper, 100 sheets per pack
- PB.5255** Immersion oil, 25 ml. Refraction index n = 1.482
- PB.5274** Isopropyl alcohol 99%, 200 ml
- PB.5275** Cleaning kit: lens fluid, lint free lens tissue/paper, brush, air blower, cotton swabs

WD = Working distance

LIFE SCIENCE MICROSCOPES

Oxion

Oxion

The microscopes of the Oxion series are dedicated to professionals in life sciences applications, laboratories of universities or research centers

Thanks to the high resolution optics and state-of-the-art components, these microscopes can be widely used from routine to fundamental research applications



OX.3035

OX.3025 TO OX.3065

397 (h) x 185 (w) x 294 mm (d) | 7.5 kg

HIGHLIGHTS

- HWF 10x/22 mm eyepieces
- Binocular, trinocular and multihead systems
- Optional tilting head
- Reversed nosepiece for a maximum of five objectives
- Semi plan, plan and plan phase contrast IOS objectives
- 150 x 140 mm stage
- Optional ceramic stage
- Abbe condenser and Zernike condenser for phase contrast
- 3 W LED illumination for brightfield and phase contrast
- 5 W LED illumination for darkfield applications
- Ergonomic stand and head
- 10 Years warranty



Ergonomic tilting head

SPECIFICATIONS

EYEPIECES

HWF 10X/22 mm eyepieces with $\pm 5^\circ$ diopter adjustments on both eyepieces. The multihead systems OX.56xx are supplied with WF 10x/20 mm eyepieces and a joystick for the positioning of a pointer in the field of view of the eyepieces. All eyepieces can be secured with an Allen screw

HEAD

Binocular and trinocular Siedentopf type heads with 30° inclined tubes. Interpupillary distance from 50 to 75 mm. A unique rotating system allows an ergonomic positioning of both tubes in an upper (431 mm) and in a lower position (397 mm). An ergonomic tilting head is also available (OX.5700-ADD)

MULTIHEAD SYSTEM

The Oxion can be extended with a unique multihead system for in total two, three or five heads that allows simultaneous observation of specimens. The central attachment is equipped with a joystick to move a green and red laser pointer across the entire field of view of all heads. Configurations with one, two or four viewing binocular heads, 30° inclined tubes and plan 4x, 10x, S40, S100x oil immersion

infinity corrected IOS objectives. Each extra viewing binocular head is equipped with high wide field plan HWF 10x/20 mm eyepieces
(reference models OX.5602, OX.5603 and OX.5605)

NOSEPIECE

Reversed nosepiece for a maximum of five objectives on ball-bearings



Ceramic stage (mounted on an OX.3035)

OBJECTIVES

- IOS Infinity corrected system
- Semi plan 4x/0.10, 10x/0.25, S40x/0.65 and S100x/1.25 oil immersion IOS objectives
 - Plan 4x/0.10, 10x/0.25, S40x/0.65 and S100x/1.25 oil immersion IOS objectives
 - Plan phase contrast 10x/0.25, 20x/0.45, S40x/0.65 and S100x/1.25 oil immersion IOS objectives
 - Plan semi apochromatic Fluarex 4x/0.10, 10x/0.25, S40x/0.65 and S100x/1.25 oil immersion IOS objectives

All S40x, S60x and S100x oil immersion objectives are spring loaded

All optics have an anti-reflection coating for maximum light throughput and are anti-fungus treated

MODELS	Bino	Trino	Semi plan 4x/ 10x/S40x/S100x IOS objectives	Plan4x/10x/ S40x IOS objectives	Plan S100x IOS objective	Plan semi apo 4x/10x/ S40x objectives	Plan semi apo S100x IOS objectives	Plan phase 10x/ 20x/S40x/ S100x IOS objectives	Plan phase 10x/ S40x/ S100x IOS objectives
OX.3012	•		•						
OX.3015		•	•						
OX.3020	•			•					
OX.3025		•		•					
OX.3030	•			•	•				
OX.3035		•		•	•				
OX.3040	•							(1)	
OX.3045		•						(1)	
OX.3042	•								(2)
OX.3047		•							(2)
OX.3050	•					•			
OX.3055		•				•			
OX.3060	•					•	•		
OX.3065		•				•	•		
OX.3064		•		•	(3)				
OX.5602	(4)			•	•				
OX.5603	(5)			•	•				
OX.5605	(6)			•	•				

(1) Plan phase objectives supplied with AE.3184 condenser with four phase contrast rings

(2) Plan phase objectives supplied with AE.3183 condenser with three phase contrast rings and one stop for darkfield

(3) Supplied with cardioid mirror darkfield oil immersion condenser and S100x objective with built-in iris diaphragm

(4) Multihead system, supplied with a trinocular and one binocular head

(5) Multihead system, supplied with a trinocular and two binocular heads

(6) Multihead system, supplied with a trinocular and four binocular heads

STAGE

150 x 140 mm stage with integrated 76 x 50 mm X-Y mechanical stage

A ceramic stage is also available on request. (AE.3197-ADD, only with new microscopes)

The Oxion can be supplied with a heating stage which can be set up to 50° Celsius by a PID temperature controller. Only available with new microscopes. Higher temperatures can be achieved on special request

CONDENSER FOR BRIGHTFIELD

Height adjustable Abbe condenser N.A. 1.25 with iris diaphragm.

Phase contrast rings mounted in slider can be inserted in the condenser for 10x and S40x or 20x and S100x phase contrast objectives. A darkfield stop in slider for the 10x, 20x and S40x objectives can also be inserted with magnification indication

CONDENSERS FOR ZERNIKE PHASE CONTRAST

- Two optional height adjustable Zernike NA. 1.25 phase contrast disc condensers are available:
- With plan phase 10/20/S40x and S100x oil immersion objectives
 - With plan phase 10/S40x/S100x oil immersion objectives and darkfield position for darkfield contrast up to 400x magnification

FOCUSING

Coaxial coarse and fine adjustments, 200 graduations, 1 µm per graduation, 200 µm per rotation, total travel range is approximately 28 mm. Supplied with an adjustable rack stop to prevent damage to sample and objectives.

The coarse adjustments are equipped with friction control

CARDIOID MIRROR CONDENSER FOR DARKFIELD

The OX.3064 model is supplied with a condenser with cardioid mirrors, a 5 W integrated NeoLED™ illumination and a S100x objective with built-in iris diaphragm for real 1,000x darkfield observations. By using AE.3612-O and 86.521 an existing brightfield microscope can be upgraded to darkfield

ILLUMINATION FOR DARKFIELD

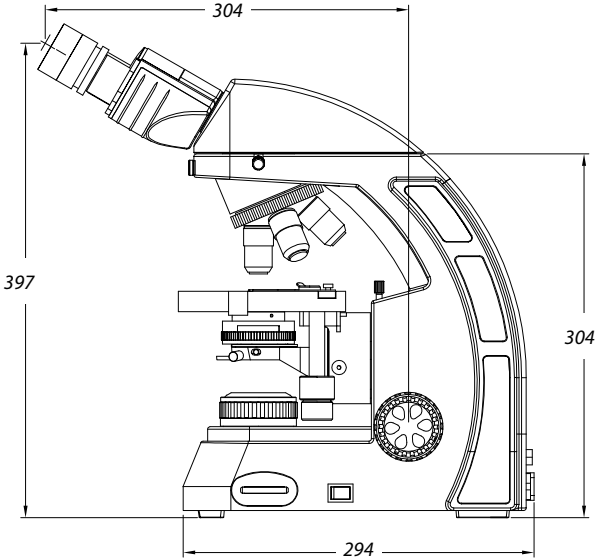
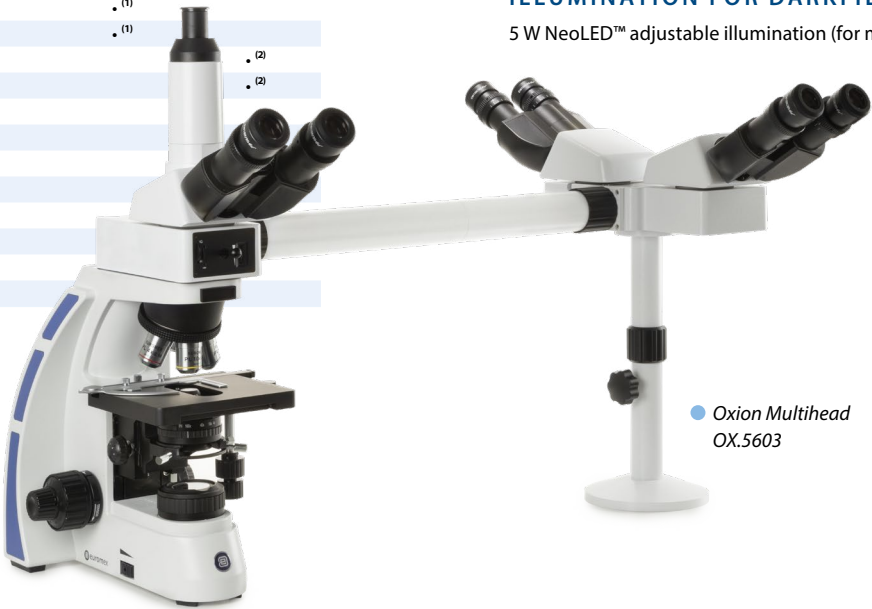
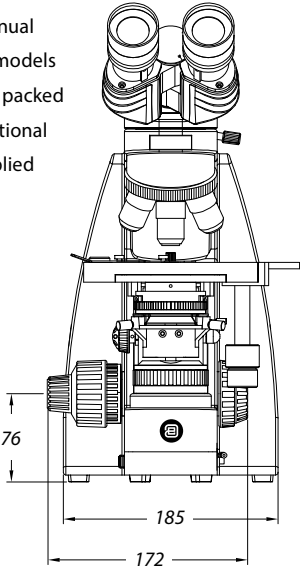
5 W NeoLED™ adjustable illumination (for model OX.3064)

ILLUMINATION FOR BRIGHTFIELD AND PHASE CONTRAST

All models are supplied with a 3 W adjustable NeoLED™ illumination with integrated 100-240 V power supply. Köhler illumination with field diaphragm

PACKAGE CONTENT

Supplied with power cord, dust cover, a spare fuse, user manual and 5 ml immersion oil for models with an S100x objective. All packed in a polystyrene box. An optional aluminum case can be supplied



ACCESSORIES AND SPARE PARTS

EYEPIECES

- AE.3210** HWF 10x/22 mm eyepiece
- AE.3215** HWF 15x/13 mm eyepiece
- AE.3223** HWF 10x/22 mm eyepiece
with 10 mm/100 micrometer
- AE.3225** Pair of eyecups

OBJECTIVES

- AE.3160** Semi plan 4x/0.10 infinity corrected IOS objective. WD 15 mm
- AE.3162** Semi plan 10x/0.25 infinity corrected IOS objective. WD 15 mm
- AE.3166** Semi plan S40x/0.65 infinity corrected IOS objective. WD 0.42 mm
- AE.3168** Semi plan S60x/0.85 infinity corrected IOS objective. WD 0.12 mm
- AE.3170** Semi plan S100x/1.25 oil immersion infinity corrected IOS objective. WD 0.19 mm
- AE.3102** Plan 2x/0.06 infinity corrected IOS objective WD 4.1 mm
- AE.3104** Plan 4x/0.10 infinity corrected IOS objective. WD 11.9 mm
- AE.3106** Plan 10x/0.25 infinity corrected IOS objective. WD 12.1 mm
- AE.3108** Plan 20x/0.40 infinity corrected IOS objective. WD 1.5 mm
- AE.3110** Plan S40x/0.65 infinity corrected IOS objective. WD 0.36 mm
- AE.3112** Plan S60x/0.85 infinity corrected IOS objective. WD 0.30 mm
- AE.3114** Plan S100x/1.25 oil immersion infinity corrected IOS objective. WD 0.18 mm

- 86.521** Plan S100x/1.25 oil immersion infinity corrected IOS objective with built-in iris diaphragm
- AE.3144** Plan semi apochromatic Fluarex 4x/0.13 infinity corrected IOS objective. WD 18.5 mm
- AE.3146** Plan semi apochromatic Fluarex 10x/0.30 infinity corrected IOS objective. WD 10.6 mm
- AE.3148** Plan semi apochromatic Fluarex 20x/0.50 infinity corrected IOS objective. WD 2.33 mm
- AE.3152** Plan semi apochromatic Fluarex S40x/0.75 infinity corrected IOS objective. WD 0.6 mm
- AE.3156** Plan semi apochromatic Fluarex S100x/1.28 oil immersion infinity corrected IOS objective. WD 0.21 mm
- AE.3126** Plan phase 10x/0.25 infinity corrected IOS objective. WD 12.1 mm
- AE.3128** Plan phase 20x/0.45 infinity corrected IOS objective. WD 1.5 mm
- AE.3130** Plan phase S40x/0.65 infinity corrected IOS objective. WD 0.36 mm
- AE.3134** Plan phase S100x/1.25 oil immersion infinity corrected IOS objective. WD 0.18 mm

PHASE CONTRAST ATTACHMENTS

- AE.3180** Telescope for alignment of phase contrast rings
- AE.3183** Phase contrast Zernike condenser with three phase rings and one darkfield stop and plan phase PLPH 10x, S40x, S100x oil objectives
- AE.3184** Phase contrast Zernike condenser with four phase rings and plan phase PLPH 10x, 20x, S40x, S100x oil objectives
- AE.3186** Slider phase contrast kit with plan phase 10x/20x/40x/S100x oil objectives and two sliders with phase contrast rings for PLPH 10x/S40x and 20x/S100x objectives
- AE.3187** Slider with phase rings for 10x and S40x plan phase contrast objectives
- AE.3189** Slider with phase rings for 20x and S100x oil plan phase contrast objectives



● AE.3184

POLARIZATION ATTACHMENTS

- AE.3190** Polarizer/analyzer set
- AE.3192** Polarizer slider for nosepiece
- AE.3194** Polarizer for lamphouse

FILTERS

- AE.3196** Frosted filter 45 mm, to be mounted on lamphouse
- AE.3198** Blue glass filter 45 mm, to be mounted on lamphouse
- AE.3200** Yellow glass filter 45 mm, to be mounted on lamphouse
- AE.3202** Green glass filter 45 mm, to be mounted on lamphouse

CAMERA ACCESSORIES

- AE.5120** Trinocular 23.2 mm tube for Oxion revision 1 photo port
- AE.5120-2** Trinocular 23.2 mm tube for Oxion revision-2 photo port
- AE.5130** Universal SLR camera adapter for 23.2 mm tubes with built-in 2x magnification lens. Needs T2 adapter and OX.5120
- AE.5025** T2 adapter for Nikon D digital SLR cameras
- AE.5040** T2 adapter for Canon EOS digital SLR cameras

MISCELLANEOUS

- AE.3185** Slider with darkfield stop (only for objectives 10x, 20x and S40x)
- OX.9810** CS/C mount with 1.0x objective
- OX.9833** C-mount adapter with 0.33x objective for Oxion microscopes and 1/3" cameras
- OX.9850** C-mount adapter with 0.5x objective for Oxion and Oxion Inverso microscopes and 1/2" cameras
- AE.5168-O** Heating stage and temperature controller up to 50°C. Only supplied with newly purchased microscopes
- AE.3612-O** Cardioid darkfield condenser with integrated 5 W LED light source and external 100-240 V mains adapter
- SL.5510** LED replacement for Oxion

- AE.3199** Glass fuses 3.15 A 250 V, 10 pieces
- OX.3010** Aluminum transport case with flight case locks
- OX.3011** Aluminum transport case with classical locks

DISPOSABLES

- PB.5155** Microscope slides 76 x 26 mm, ground edges, 50 pieces
- PB.5165** Cover glasses 18 x 18 mm, thickness 0.13-0.17 mm, 100 pieces
- PB.5168** Cover glasses 22 x 22 mm, thickness 0.13-0.17 mm, 100 pieces
- PB.5245** Lens cleaning paper, 100 sheets per pack
- PB.5255** Immersion oil, n = 1.482 (25 ml)
- PB.5274** Isopropyl alcohol 99% (200 ml)
- PB.5275** Cleaning kit: lens cleaning fluid, lint free lens tissue, brush, air blower, cotton swabs
- PB.5276** Microscope maintenance and servicing kit, 16pcs: cleaning brush, 6 pcs screwdriver set, air blower, 3 pcs Allen key, 1.5, 2, 2.5 mm, lens cleaning fluid 20 ml, cleaning cloth 140 x 140 mm, 100 pcs lens tissue sheets, tube of maintenance grease, 10 ml bottle of oil, packed in a nice toolbox

WD = working distance



● OX.3035

LIFE SCIENCE MICROSCOPES

BlueLine
DUTCH QUALITY

NeoLED™
euromex optical technology

BioBlue.Lab

The BlueLine flagship BioBlue.Lab is the ideal laboratory instrument. The steady base, infinity corrected objectives and phase contrast possibilities makes the BioBlue.Lab a high quality all round microscope

All models are equipped with NeoLED™ illumination system for high resolution images and are available in binocular and trinocular versions

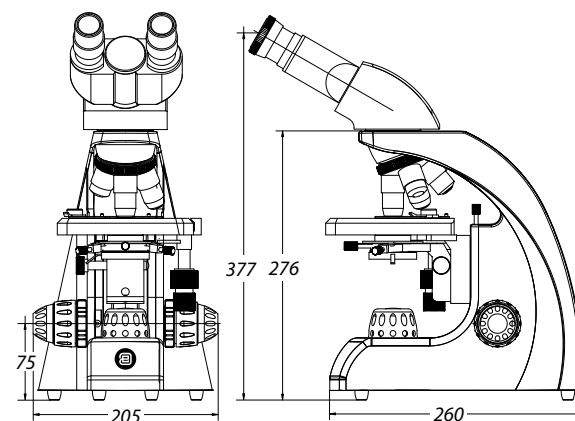
BB.1153-PLi

BB.1152-PLi
378 (h) x 190 (w) x 260 mm (d) | 5.4 kg
BB.1153-PLi
448 (h) x 190 (w) x 260 mm (d) | 5.6 kg



HIGHLIGHTS

- WF 10x/20 mm eyepieces
- Binocular and trinocular models
- Reversed quadruple nosepiece
- Plan and plan phase objectives
- Non-infinity and infinity optical system
- Integrated rackless mechanical stage
- 3 W NeoLED™ illumination
- Ergonomic carrying grip
- 10 Years warranty



These ergonomic easy-to-use microscopes have been designed specifically for laboratory and university applications. The 150 x 140 mm mechanical stage has an integrated rackless X-Y stage with 75 x 30 mm travel range

An important feature of the BioBlue.Lab is the rackless stage, which provides a smooth translation of the specimen and highly precise positioning. This plays an integral part in most demanding cytology and histopathology applications

The BioBlue.Lab microscope models offer great functionality and are equipped with WF 10x/20 mm eyepieces, plan and IOS plan 4x/ 10x/ S40x/ S100x infinity corrected objectives

BioBlue.Lab microscopes can also be supplied with IOS plan phase contrast objectives 10x / 20x / S40x / S100x, which are infinity corrected



BB.1153-PLPHi



BioBlue

BioBlue.Lab

This enhancement is suitable for a wide variety of routine applications in laboratories and field microscopy



Check out the product video on YouTube and learn more about the BlueLine. YouTube channel: **Euromex Optics Group B.V.**

SPECIFICATIONS

EYEPIECES

Wide field WF 10x/20 mm eyepieces

HEAD

Binocular and trinocular models have 30° inclined Ø 30 mm tubes. The interpupillary distance is adjustable between 48 to 75 mm. All models have a ±5 diopter adjustment on left tube. All heads are 360° rotatable and secured with a screw

NOSEPIECE

Reversed quadruple nosepiece on ball bearings.
Slot for analyzer (BB.9602)

OBJECTIVES

BioBlue.Lab microscopes are equipped with plan, plan IOS (infinity corrected) and plan phase IOS (infinity corrected) objectives. Optional 20x/0.40 and S60x/0.85 objectives are also available. The S40x, S60x and S100x objectives are spring loaded
All optics are anti-fungus treated and anti-reflection coated for maximum light throughput

FOCUSING

Coaxial coarse and fine adjustments with 200 graduations. Precision 1.5 µm per graduation, 0.3 mm per rotation. Total travel range is approximately 28 mm. Supplied with an adjustable rack stop to prevent damage to sample and objectives. The coarse adjustments are equipped with friction control

STAGE

Rackless 150 x 140 mm stage with mechanical 75 x 30 mm X-Y translation stage

CONDENSER

Height adjustable Abbe condenser N.A. 1.25 with iris diaphragm and filter holder. Supplied with white filter.
Height adjustable Zernike N.A. 1.25 phase contrast condenser with filter holder. Supplied with green filter

ILLUMINATION

Binocular and trinocular models are supplied with an adjustable 3 W NeoLED™ illumination system for increased light output. Integrated 100-240V power supply

PACKAGE CONTENT

Supplied with power cord, dust cover, a spare fuse, user manual and 5 ml immersion oil and white filter.
All packed in a polystyrene box



● BB.9126

MODELS	Bino	Trino	4x/10x/S40x/S100x plan objectives	4x/10x/S40x/S100x plan IOS objectives	10x/20x/S40x/S100x plan phase objective	10x/20x/S40x/S100x plan phase IOS objectives	Rackless mechanical stage	Neo LED	Weight (kg)
BB.1152-PL	•		•				•	•	5.4
BB.1153-PL		•	•				•	•	5.5
BB.1152-PLi	•			•			•	•	5.4
BB.1153-PLi		•		•			•	•	5.5
BB.1152-PLPHi	•					•	•	•	5.6
BB.1153-PLPHi		•				•	•	•	5.7

ACCESSORIES AND SPARE PARTS

EYEPIECES

- BB.6010** WF 10x/20 mm eyepiece, 30 mm tube
- BB.6110** WF 10x/20 mm eyepiece, 30 mm tube with micrometer reticle
- BB.6015** WF 15x/15 mm eyepiece, 30 mm tube
- BB.6020** WF 20x/11 mm eyepiece, 30 mm tube
- BB.6099** Pair of eyecups

OBJECTIVES

- BB.8804** Plan DIN 4x/0.10 objective. WD 17.92 mm
- BB.8810** Plan DIN 10x/0.25 objective. WD 2.04 mm
- BB.8820** Plan DIN 20x/0.40 objective. WD 1.20 mm
- BB.8840** Plan DIN S40x/0.65 objective. WD 0.65 mm
- BB.8860** Plan DIN S60x/0.80 objective. WD 0.19 mm
- BB.8800** Plan DIN S100x/1.25 oil immersion objective. WD 0.18 mm
- BB.7204** Plan DIN 4x/0.10 IOS objective. WD 7.18 mm
- BB.7210** Plan DIN 10x/0.25 IOS objective. WD 4.80 mm
- BB.7220** Plan DIN 20x/0.40 IOS objective. WD 5.27 mm
- BB.7240** Plan DIN S40x/0.65 IOS objective. WD 0.68 mm
- BB.7260** Plan DIN S60x/0.85 IOS objective. WD 0.50 mm
- BB.7200** Plan DIN S100x/1.25 oil immersion IOS objective. WD 0.20 mm
- BB.7710** Plan phase DIN 10x/0.25 IOS objective. WD 4.7 mm
- BB.7720** Plan phase DIN 20x/0.40 IOS objective. WD 1.75 mm
- BB.7740** Plan phase DIN S40x/0.65 IOS objective. WD 0.72 mm
- BB.7700** Plan phase DIN S100x/1.25 oil immersion IOS objective. WD 0.50 mm

WD = working distance

MISCELLANEOUS

- BB.9126** Zernike phase contrast kit with PLPHi IOS objectives and rotating phase contrast disc with four annuli, centering telescope and green filter
- BB.9602** Analyzer in slider, Ø 25 mm. Fits in nosepiece
- BB.9707** White filter Ø 32 mm. Fits in filter holder
- BB.9732** Polarization filter, 32 mm diameter. Fits in filter holder
- BB.9880** Köhler attachment
- BB.9993** 3 W NeoLED™ replacement unit
- BB.9900** Aluminum case

CAMERA ACCESSORIES

- AE.5130** Universal SLR camera adapter with 2x projection lens for 23.2 mm tubes. Needs T2 adapter
- AE.5040** T2 adapter for Canon EOS SLR digital camera
- AE.5025** T2 adapter for Nikon D SLR digital camera

DISPOSABLES

- PB.5155** Microscope slides 76 x 26 mm, ground edges, 50 pieces
- PB.5157-W** Microscope slides 76 x 26 mm, ground edges. White frosted side, 50 pieces per pack
- PB.5157-B** Microscope slides 76 x 26 mm, ground edges. Blue frosted side, 50 pieces per pack
- PB.5165** Cover glasses 18 x 18 mm, thickness 0.13-0.17 mm, 100 pieces
- PB.5168** Cover glasses 22 x 22 mm, thickness 0.13-0.17 mm, 100 pieces
- PB.5245** Lens cleaning paper, 100 sheets per pack
- PB.5255** Immersion oil, n = 1.482 (25 ml)
- PB.5274** Isopropyl alcohol 99% (200 ml)
- PB.5275** Cleaning kit: lens cleaning fluid, lint free lens tissue, brush, air blower, cotton swabs
- PB.5276** Microscope maintenance and servicing kit, 16pcs: cleaning brush, 6 pcs screwdriver set, air blower, 3 pcs Allen key, 1.5, 2, 2.5 mm, lens cleaning fluid 20 ml, cleaning cloth 140 x 140 mm, 100 pcs lens tissue sheets, tube of maintenance grease, 10 ml bottle of oil, packed in a nice toolbox



● BioBlue.Lab with phase contrast

LIFE SCIENCE MICROSCOPES

Oxion
inverso

HIGHLIGHTS

- Life science applications
- Observation of tissue cultures, living cells
- Brightfield and phase contrast
- Long working distance IOS plan achromatic objectives
- Revolving quintuple nosepiece
- 5 W LED transmitted illumination
- 10 Years warranty

- Micromanipulator for intracytoplasmic sperm injection (ICSI)

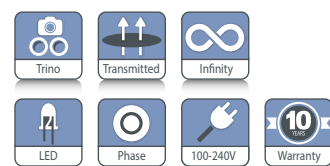
Oxion Inverso

The Oxion Inverso inverted microscopes are useful for observation of living organisms and tissues cultures in cell culture dishes and flasks

The Oxion Inverso series is available in two configurations:

- for brightfield and phase contrast
- for fluorescence (see chapter on fluorescence)

Dedicated objectives are suitable for 1.2 mm thick glass bottoms of cell culture dishes and flasks



OX.2053-PLPH

BRIGHTFIELD OX.2003-PL / OX.2053-PL
488 (h) x 231 (w) x 555 mm (d) | 12.0 kg
PHASE CONTRAST OX.2203-PLPH / OX.2253-PLPH
488 (h) x 231 (w) x 555 mm (d) | 12.0 kg

SPECIFICATIONS

EYEPIECES

Pair of DIN HWF plan 10x/22 mm eyepieces

HEAD

Trinocular 45° inclined tubes with extended low and high positions for eyepieces. One diopter adjustment on left eyepiece. Interpupillary distance of 54 to 75 mm. Trinocular head with 100-0 % and 80-20 % positions

NOSEPIECE

Revolving quintuple nosepiece on ball-bearings

OBJECTIVES FOR BRIGHTFIELD

(models OX.2003-PL and OX.2053-PL)

Infinity color corrected long working distance plan 10x/0.25, 20x/0.40, 40x/0.60 IOS objectives. An optional 60x/0.70 IOS objective is also available

OBJECTIVES FOR PHASE CONTRAST

(models OX.2003-PLPH and OX.2053-PLPH)

Infinity color corrected long working distance plan phase 10x/0.25, 20x/0.40, 40x/0.60 IOS objectives

FLUAREX OBJECTIVES FOR BRIGHTFIELD

Infinity color corrected long working distance plan Fluarex 10x/0.30, 20x/0.45, 40x/0.65 IOS objectives. An optional plan Fluarex 60x/0.75 IOS objective is also available

FLUAREX OBJECTIVES FOR PHASE CONTRAST

Infinity color corrected long working distance plan Fluarex 10x/0.30 and plan phase Fluarex 20x/0.45 and 540x/0.65 IOS objectives

All objectives corrected for 1.2 mm thickness.

Fluarex™ objectives are made of low-absorption glass

Fluarex™ is a trademark of Euromex microscopen bv

All optics are anti-fungus treated and anti-reflection coated for maximum light throughput

STAGE

Stage 250 x 230 mm equipped with a coaxial mechanical 120 x 78 mm X-Y stage. Delivered with:

- Stage extension plate
- Metal insert for Ø 65 mm cell culture dish or Multiwell
- Metal insert for 76 x 26 mm slides and 54 mm cell dish (only for models with X-Y stage)
- Optional universal cell culture holder

CONDENSER

N.A. 0.30 condenser with iris diaphragm.
Working distance 72 mm
The models for the phase contrast OX.2003-PLPH, OX.2053-PLPH, OX.2253-PLPHF and OX.2453-PLPHF are supplied with a slider with 4x/10x and 20x/40x pre-centered phase rings

FOCUSING ADJUSTMENT

Coaxial 25 mm coarse and fine adjustments, 2 µm precision and with friction adjustment

ILLUMINATION

Transmitted 5 W LED Intensity adjustable with internal 100-240 V power supply. Fuse holder 3.15 A / 250 V
Oxion Inverso can be extended with fluorescence equipment

FILTERS FOR PHASE CONTRAST MODELS

Interference filter 550 nm green and blue filter, Ø 45 mm

PACKAGE CONTENT

Supplied with metal insert with Ø 25 mm hole, metal insert for Ø 35 mm cell culture dish, blue LBD and green 550 nm interference Ø 45 mm filter, power cord, dust cover and user

MODELS	LWD Plan 10x/20x/40x objectives	LWD Plan phase 10x/20x/40x objectives	Mechanical stage	ICSI equipment
OX.2003-PL	•			
OX.2053-PL	•		•	
OX.2003-PLPH		•		
OX.2053-PLPH		•	•	
OX.2003-PLPH-ICSI		•		•
OX.2053-PLPH-ICSI		•	•	•

LWD = long working distance

manual. Phase contrast models are supplied with 4x/10x and 20x/40x phase contrast annuli in slider, green filter and alignment telescope

ICSI SET (AE.8000)

- (Intracytoplasmic sperm injection)
- Perfect for inexperienced users in need of training practice as well as for professionals
 - Complete manual system
 - Large movement range
 - Easy micropipette repositioning
 - Adjustable micropipette holder angle between 20° and 40°
 - Micropipette holder fixing knob reduces vibration and provides easy handling of the sperm
 - Easy installation and service
 - 3D Hydraulic manipulation joysticks for smooth movement
 - Pneumatic air injector for ICSI and holding
 - No service required for injector
 - Identical sensitive injectors on both sides and interchangeable
 - Top quality for affordable price
 - Medical device CE mark
 - Movement range: X/Y/Z: 20 mm each, 1 mm for one complete turn of the handle
 - Optional heating stage with controller

Set includes two 3D hydraulic joysticks, two pipette setup mechanisms, one connection bar with moving handle, two air injectors with tubing and pen type micromanipulation, pipette holder, two metal plates for injectors, one set of Allen wrenches, one ruler for mechanic home position adjustment

HEATING STAGES AE.8010 AND AE.8015

Heating glass stage for Euromex microscope stage with 110 mm circular hole. The glass plate fits the circular opening of the X-Y stage and enables a flat glass object-plate with constant temperature. The stage has an aluminum frame for superior resistance and flatness. Glass thickness 0.5 mm. Plate diameter 110 mm



• AE.8010 Controller

Controller AE.8010

- 2-Channel Temperature Controller with touchscreen interface
- One controller can control up to two devices
- External temperature sensor (included) and self calibration routines allow easy calibration of the heating devices
- On-board data logging allows for recording temperature as a function of time and logging calibration events and alarms
- The password protected controller is equipped with routines to re-calibrate the sensors against certified thermometers
- Temperature range: from ambient to 60°C
- Temperature accuracy on specimen: ± 0.3°C
- 4.3" touch screen interface
- External temperature sensor
- On-board data logging to USB drive
- Alarm buzzer and external alarm connector
- One controller can control up to two devices
- Self calibration routines enable high temperature accuracy



• Heating stage with AE.8015 controller

Controller AE.8015

- This is the economic and compact single-channel Temperature Controller version of the AE.8010. This model combines performance and simplicity at a economic price
- Single channel Temperature controller with LCD display temperature control push buttons.
 - Small and robust while maintaining reliability
 - Straight forward in usage
 - Temperature range: from ambient to 60°C
 - Set point Resolution: 0.1°C
 - One-Point Temperature Calibration and Adjustment



• OX.2053-PLPH-ICSI Oxion Inverso with ICSI equipment (intra-cytoplasmic sperm injection)

ACCESSORIES AND SPARE PARTS

EYEPIECES

- OX.6010** HWF 10x/22 mm eyepiece
- OX.6015** HWF 15x/16 mm eyepiece
- OX.6110** HWF 10x/22 mm eyepiece with micrometer reticule
- OX.6099** Pair of eyecups

PLAN OBJECTIVES FOR BRIGHTFIELD⁽¹⁾

- OX.8304** PL LWD 4x/0.10 IOS objective, WD 22 mm
- OX.8310** PL LWD 10x/0.25 IOS objective, WD 7.94 mm
- OX.8320** PL LWD 20x/0.40 IOS objective, WD 7.66 mm
- OX.8340** PL LWD 40x/0.60 IOS objective, WD 3.71 mm
- OX.8360** PL LWD 60x/0.70 IOS objective, WD 1.7 mm

PLAN FLUAREX OBJECTIVES FOR BRIGHTFIELD AND FLUORESCENCE⁽¹⁾

- OX.8604** PL FL LWD 4x/0.13 IOS objective, WD 18.5 mm
- OX.8610** PL FL LWD 10x/0.30 IOS objective, WD 7.1 mm
- OX.8620** PL FL LWD 20x/0.45 IOS objective, WD 5.91 mm
- OX.8640** PL FL LWD 40x/0.65 IOS objective, WD 1.61 mm
- OX.8660** PL FL LWD 60x/0.75 IOS objective, WD 1.04 mm

PLAN PHASE CONTRAST OBJECTIVES^{(1) (2)}

- OX.8404** PLPH LWD 4x/0.13 IOS objective, WD 10.4 mm⁽¹⁾
- OX.8410** PLPH LWD 10x/0.25 IOS objective, WD 7.94 mm⁽¹⁾
- OX.8420** PLPH LWD 20x/0.40 IOS objective, WD 7.66 mm⁽¹⁾
- OX.8440** PLPH LWD 40x/0.60 IOS objective, WD 3.71 mm⁽¹⁾

OBJECTIVES FOR FLUORESCENCE AND PHASE CONTRAST^{(1) (2) (3)}

- OX.8720** Plan phase Fluarex LWD 20x/0.45 infinity corrected IOS objective. WD 5.91 mm⁽¹⁾
- OX.8740** Plan phase Fluarex LWD 40x/0.65 infinity corrected IOS objective. WD 1.1 mm⁽¹⁾

⁽¹⁾ All objectives corrected for 1.2 mm cover glass thickness except OX.8304

⁽²⁾ Phase contrast objectives require slider with phase contrast annuli OX.9163

⁽³⁾ Phase contrast objectives require slider with phase contrast annuli OX.9163

All optical parts are anti-fungus treated

PHASE CONTRAST ATTACHMENTS

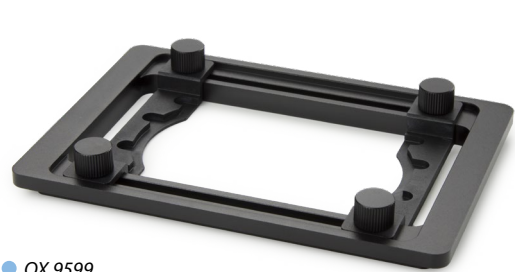
- OX.9148** Telescope for phase contrast fluorescence alignment
- OX.9149** Telescope for phase contrast alignment
- OX.9190** Slider with 4x/10x and 20x/40x phase contrast annuli

CAMERA ACCESSORIES

- OX.9810** CS/C mount with 1.0x objective
- OX.9833** C-mount adapter with 0.33x objective for Oxion microscopes and 1/3" cameras
- OX.9850** C-mount adapter with 0.5x objective for Oxion and Oxion Inverso microscopes and 1/2" cameras
- AE.5120-2** Trinocular 23.2 mm tube for Oxion photo port revision-2
- AE.5130** Universal SLR camera adapter with 2x projection lens for 23.2 mm tubes
Needs T2 adapter and AE.5120 or AE.5120-2
- AE.5025** T2 adapter for Nikon D digital SLR cameras
- AE.5040** T2 adapter for Canon EOS digital SLR cameras

STAGES AND HOLDERS

- OX.9500** Mechanical coaxial X-Y 120 x 78 mm stage
- OX.9506** Transparent glass insert with Ø 30 mm hole
- OX.9508** Metal insert with Ø 25 mm hole
- OX.9510** Metallic insert for Ø 65 mm cell culture dish and Multiwell
- OX.9512** Metal insert with 76 x 26 mm slide holder and Ø 55 mm cell culture dish holder
- OX.9535** Metal insert for Ø 35 mm cell culture dish holder
- OX.9550** Stage extension plate
- OX.9599** Universal cell culture dish holder



OX.9599

MICROMANIPULATOR ATTACHMENT

- AE.8000** Micromanipulator for intracytoplasmic sperm injection (ICSI) suitable with the Oxion Inverso inverted microscope
- AE.8010** Heating stage with transparent glass plate for AE.8000 Micromanipulator, including advanced digital temperature controller
- AE.8015** Heating stage with transparent glass plate for AE.8000 Micromanipulator, including basic 1-channel digital temperature controller

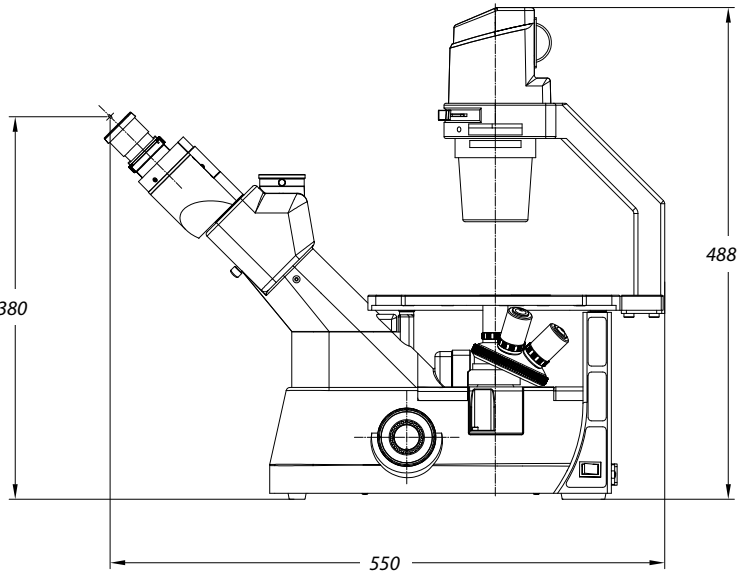
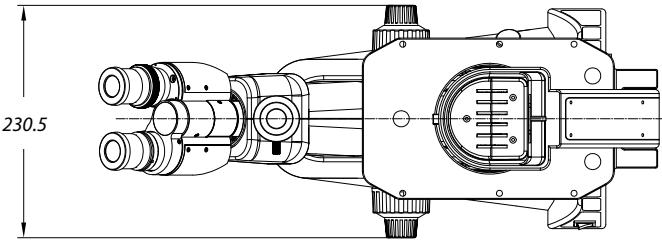
MISCELLANEOUS

- OX.9700** Blue filter Ø 45 mm
- OX.9985** 5 W NeoLED™ replacement unit
- AE.3199** Glass fuses 3.15 A 250 V packed, per 10 pieces

DISPOSABLES

- PB.5155** Microscope slides 76 x 26 mm, ground edges, 50 pieces
- PB.5165** Cover glasses 18 x 18 mm, thickness 0.13 - 0.17 mm, 100 pieces
- PB.5168** Cover glasses 22 x 22 mm, thickness 0.13 - 0.17 mm, 100 pieces
- PB.5245** Lens cleaning paper, 100 sheets per pack
- PB.5255** Immersion oil, n = 1.482 (25 ml)
- PB.5274** Isopropyl alcohol 99% (200 ml)
- PB.5275** Cleaning kit: lens cleaning fluid, lint free lens tissue, brush, air blower, cotton swabs

WD = working distance



Accessories supplied with phase contrast models

LIFE SCIENCE MICROSCOPES

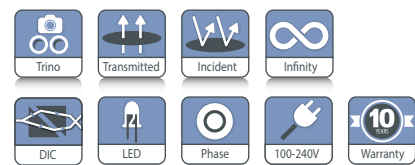
Delphi-X
inverso

Delphi-X Inverso

Delphi-X Inverso™ is an inverted microscope for the professional with demanding applications of living cell cultures and stained samples. It is available in two configurations:

- for phase contrast plus DIC (differential interference contrast) equipment
 - for fluorescence application
- Super contrast semi-apochromatic objectives with collar adjustment ring assure perfect observation of cells or tissues in 1.2 mm thick Petri dishes or flasks

• DI.1053-PLPHi



PHASE CONTRAST DI.1053-PLPHi
686.5 (h) x 276 (w) x 800 mm (d) | 31 kg

HIGHLIGHTS

- Life science applications
- Observation of tissue cultures, living cells
- Brightfield, phase contrast
- DIC (differential interference contrast)
- Long working distance IOS plan achromatic objectives
- Revolving quintuple nosepiece
- 10 W LED or 100 W halogen reflected illumination
- 10 W LED or 100 W halogen transmitted illumination
- Backwards tilting condenser arm
- Easy placement of large objects
- 10 Years warranty

SPECIFICATIONS

EYEPIECES

Pair of DIN HWF plan 10x/25 mm or 10x/22 mm eyepieces with diopter adjustment

HEAD

Trinocular 45° inclined tubes. Interpupillary distance of 47 to 78 mm. Trinocular head with 100-0, 80/20 and 0/100 positions

NOSEPIECE

Revolving sextuple nosepiece on ball-bearings. The nosepiece can be equipped with DIC prisms for the 10x/20x/40x and 60x objectives

OBJECTIVES

High numerical infinity semi-apochromatic long working distance plan phase Fluarex PLPHFi 10x/0.30, 20x/0.45, S40x/0.60 IOS objectives enable the sub-cellular structures. An optional 4x/0.13 and 60x/0.70 IOS objectives are also available. The 20x, 40x and optional 60 objectives are equipped with collar adjustment ring for glass thicknesses from 0 to 1.2 mm

Fluarex™ objectives are made of low-absorption glass.

Fluarex™ is a trademark of Euromex microscopen bv.

All optics are anti-fungus treated and anti-reflection coated for maximum light throughput



- Phase contrast and differential interference contrast condenser

STAGE

Stage 340 x 230 mm, equipped with a coaxial mechanical 130 x 85 mm X-Y stage. Supplied with:

- Metal insert for O 38 mm cell culture dish
- Metal insert for O 54 mm cell culture dish or 76 x 26 mm slides
- Metal insert for Multiwell plates (127.76 x 85.48 mm)
- Metal insert for Teraski plates (83.3 x 58.0 mm)
- Optional universal cell culture holder

CONDENSER

Rotating N.A. 0.55 condenser with iris diaphragm. Working distance is 26 mm. Supplied with phase contrast annuli for 10x/20x, 40x and 60x objectives and the DIC prisms for the 10x/20x/40x and 60x objectives. Three filter holders allow the insertion of Ø 38 mm filters in the optical path. The arm with condenser can be tilted backwards for convenient access to the stage. This allows easy placement of large objects like flasks and Petri dishes

LENS CHANGER

A lens changer with a 1.5x lens allow intermediary magnifications of 1.5 times the standard objective magnifications. Switching from 20x to 30x or 40 to 60 and from 60x to 90x magnification can be done without the need to re-focus on the sample

FLUORESCENCE FILTER SET WHEEL

The Delphi-X Inverso is supplied with a 6-position fluorescence filter set wheel. See photo below



FOCUSING ADJUSTMENT

Coaxial 10 mm coarse and fine adjustments, 1 µm precision and with friction adjustment

ILLUMINATION

Incident 10 W LED or 100 W halogen Intensity adjustable with internal 100-240 V power supply. Transmitted 10 W LED or 100 W halogen illumination. Fuse holder 5 A / 250 V. Delphi-X Inverso can be extended with fluorescence equipment

PACKAGE CONTENT

Supplied with metal insert for Ø 38 mm cell culture dish and a metal insert for Ø 54 mm cell culture dish with 76 x 26 mm slides, metal insert for Multiwell plates, metal insert for Teraski plates, blue and green interference Ø 45 mm filters, power cord, dust cover, green filter and alignment telescope and user manual

ICSI SET

- (Intracytoplasmic sperm injection)
- Perfect for inexperienced users in need of training practice as well as for professionals
 - Complete manual system
 - Large movement range
 - Easy micropipette repositioning
 - Adjustable micropipette holder angle between 20° and 40°
 - Micropipette holder fixing knob reduces vibration and provides easy handling of the sperm
 - Easy installation and service
 - 3D Hydraulic manipulation joysticks for smooth movement
 - Pneumatic Air Injector for ICSI and holding
 - No service required for injector
 - Identical sensitive injectors on both sides and interchangeable
 - Top quality for affordable price
 - Medical device CE mark
 - Movement range: X/Y/Z: 20 mm each, 1 mm for one complete turn of the handle
 - Optional heating stage with controller
- Set includes two 3D hydraulic joysticks, two pipette setup mechanisms, one connection bar with moving handle, two air injectors with tubing and pen type micromanipulation, pipette holder, two metal plates for injectors, one set of Allen wrenches, one ruler for mechanic home position adjustment. Unit is packed in a solid carry case

HEATING STAGES AE.8010 AND AE.8015

Heating glass stage for Euromex microscope stage with 110 mm circular hole. The glass plate fits the circular opening of the X-Y stage and enables a flat glass object-plate with constant temperature. The stage has an aluminum frame for superior resistance and flatness. Glass thickness 0.5 mm. Plate diameter 110 mm

Controller AE.8010

- 2-Channel Temperature Controller with touchscreen interface
- One controller can control up to two devices
- External temperature sensor (included) and self calibration routines allow easy calibration of the heating devices

- On-board data logging allows for recording temperature as a function of time and logging calibration events and alarms
- The password protected controller is equipped with routines to re-calibrate the sensors against certified thermometers
- Temperature range: from ambient to 60°C
- Temperature accuracy on specimen: ± 0.3°C
- 4.3" touch screen interface
- External temperature sensor
- On-board data logging to USB drive
- Alarm buzzer and external alarm connector
- One controller can control up to two devices
- Self calibration routines enable high temperature accuracy



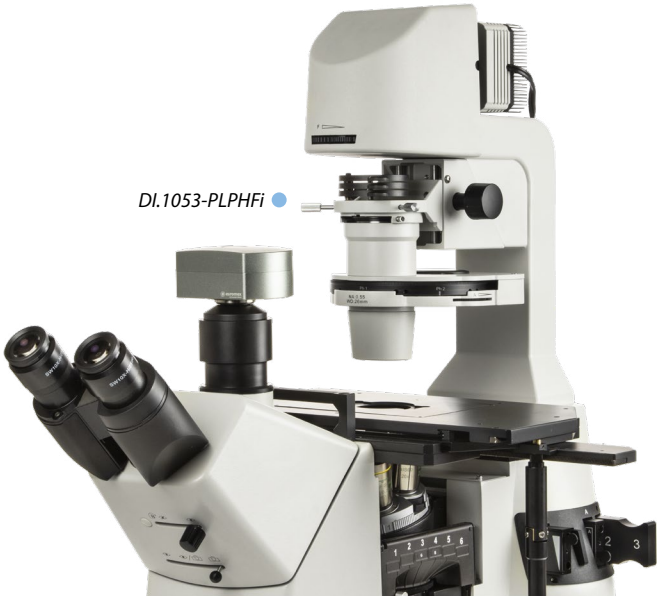
Controller AE.8015

This is the economic and compact single-channel Temperature Controller version of the AE.8010. This model combines performance and simplicity at a economic price

- Single channel Temperature controller with LCD display temperature control push buttons.
- Small and robust while maintaining reliability
- Straight forward in usage
- Temperature range: from ambient to 60°C
- Set point Resolution: 0.1°C
- One-Point Temperature Calibration and Adjustment



Filters in sliders



MODELS	LWD Plan phase 10x/20x/540x objectives	100 W Halogen incident illumination	10 W LED incident illumination
DI.1053-PLPHFi	•		•
DI.2053-PLPHFi	•	•	

ACCESSORIES AND SPARE PARTS

EYEPIECES

- DI.6010** Super wide field SWF 10x/25 mm eyepiece
- DI.6010-C** Super wide field SWF 10x/25 mm eyepiece with crosshairs
- DI.6010-M** Super wide field SWF 10x/25 mm eyepiece with micrometer
- DI.6010-CM** Super wide field SWF 10x/25 mm eyepiece with micrometer and crosshairs
- DI.6010-SG** Super wide field SWF 10x/25 mm eyepiece with 20 x 20 square grid reticle
- DI.6012** Wide field WF 12.5x/17.5 mm eyepiece
- DI.6015** Wide field WF 15x/16 mm eyepiece
- DI.6020** Wide field WF 20x/12 mm eyepiece
- DI.6099-L** Eyecups for eyepiece

OBJECTIVES

- DI.8704** Infinity semi-apochromatic long working distance plan Fluarex PLFi 4x/0.13, IOS objective. WD 16.8 mm
- DI.8710** Infinity semi-apochromatic long working distance plan phase Fluarex PLPHFi 10x/0.30, IOS objective PLPHi 10x/0.30 objective. WD 10.2 mm
- DI.8720** Infinity semi-apochromatic long working distance plan phase Fluarex PLPHFi 20x/0.45 objective. WD 7.5 to 8.8 mm
- DI.8740** Infinity semi-apochromatic long working distance plan phase Fluarex PLPHFi S40x/0.60 IOS objective. WD 3 to 4.4 mm
- DI.8760** Infinity semi-apochromatic long working distance plan phase Fluarex PLPHFi S60X/0.70 IOS objective. WD 1.8-2.6 mm



DIFFERENTIAL INTERFERENCE CONTRAST

- DI.9690** Rotating DIC and BF disc condenser without DIC prisms for life science Delphi-X Inverso models. Needs one or more DIC-prisms (DI.9660-xx)
- DI.9690-10** DIC prism for rotating disc condenser (DI.9690) for life science Delphi-X Inverso models
- DI.9690-20** DIC prism for rotating disc condenser (DI.9690) for life science Delphi-X Inverso models
- DI.9690-40** DIC prism for rotating disc condenser (DI.9690) for life science Delphi-X Inverso models
- DI.9690-60** DIC prism for rotating disc condenser (DI.9690) for life science Delphi-X Inverso models
- DI.9693-10** DIC insert with small prism to be used with 10x objective DI.8710
- DI.9693-20** DIC insert with small prism to be used with 20x objective DI.8720
- DI.9693-40** DIC insert with small prism to be used with 10x objective DI.8740
- DI.9693-60** DIC insert with small prism to be used with 10x objective DI.8760

MICROMANIPULATOR ATTACHMENT

- AE.8000** Micromanipulator for intracytoplasmic sperm injection (ICSI) suitable with the Oxion Inverso inverted microscope
- AE.8010** Heating stage with transparent glass plate for AE.8000 Micromanipulator, including digital temperature controller
- AE.8015** Heating stage with transparent glass plate for AE.8000 Micromanipulator, including basic 1-channel digital temperature controller

CAMERA ACCESSORIES

- DI.9810** C-mount with 1x magnification for C-mount camera
- DI.9835** C-mount with high resolution relay 0.35x objective for 1/3 inch C-mount camera
- DI.9850** C-mount with high resolution relay 0.50x objective for 1/2 inch C-mount camera
- DI.9863** C-mount with high resolution relay 0.63x objective for 2/3 inch C-mount camera

- AE.5130** Universal SLR adapter with built-in 2x lens for standard 23.2 mm tube. Needs T2 adapter
- AE.5025** T2 adapter for Nikon D SLR digital camera
- AE.5040** T2 adapter for Canon EOS SLR digital camera

MISCELLANEOUS

- DI.9961** 100 Watt 12 V halogen bulb
- DI.9997** 10 Watt LED replacement
- DI.9997-R** 10 Watt LED replacement for reflected illumination
- AE.5214** 500 mA 250 V fuses for LED models, 10pcs
- AE.5216** 5 A 250 V fuses for Halogen models, 10pcs

DISPOSABLES

- PB.5155** Microscope slides 76 x 26 mm, ground edges, 50 pieces per pack
- PB.5157-W** Microscope slides 76 x 26 mm, ground edges and frosted side white color, 50 pieces per pack
- PB.5157-B** Microscope slides 76 x 26 mm, ground edges and frosted side blue color, 50 pieces per pack
- PB.5165** Cover glasses 18 x 18 mm, 0.13-0.17 mm, 100 pieces
- PB.5168** Cover glasses 22 x 22 mm, 0.13-0.17 mm, 100 pieces
- PB.5245** Lens cleaning paper, 100 sheets per pack
- PB.5255** Immersion oil, 25 ml. Refraction index n = 1.482
- PB.5274** Isopropyl alcohol 99%, 200 ml
- PB.5275** Cleaning kit: lens fluid, lint free lens tissue/paper, brush, air blower, cotton swabs

WD = working distance

